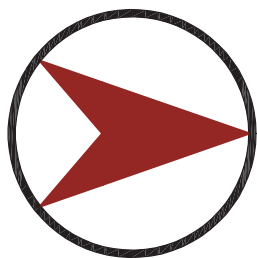


## 第二式 標準格局設計

標準格局延伸前一節的初步架構，修正細部的空間尺寸與格局架構，包含每一空間開口的串聯關係、空間機能所對應的家具位置等，在此節中，完全因應風水設計準則的限制與建議，整體性的進行修正與改造，示範細節空間的處理效果。

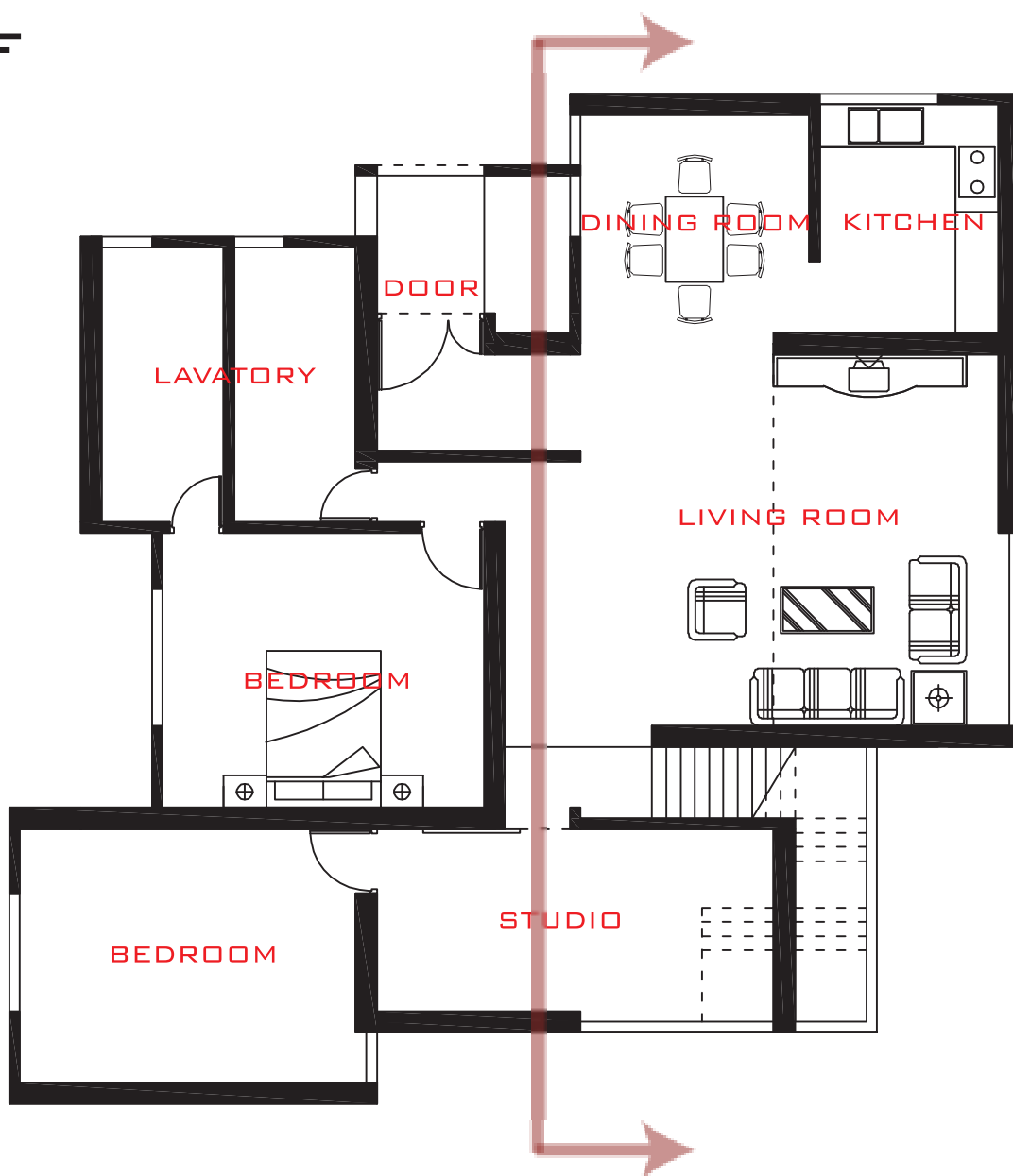
# B. 標準格局

WEST

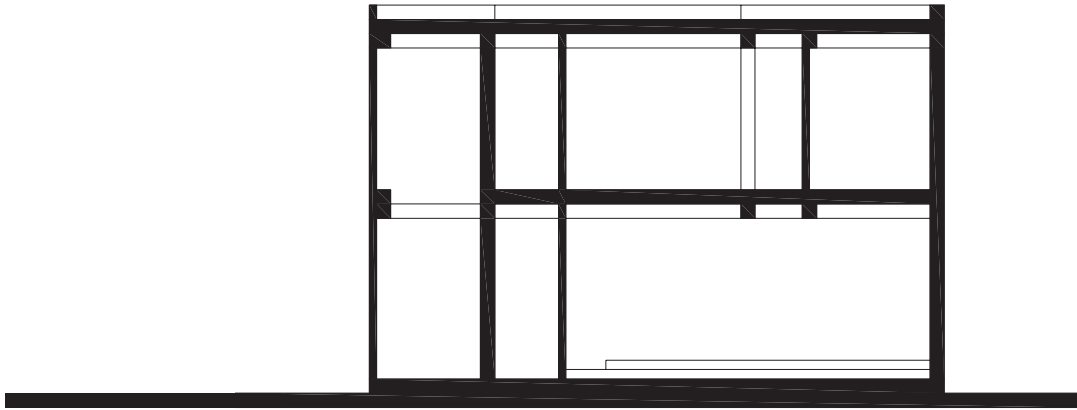


# 三震

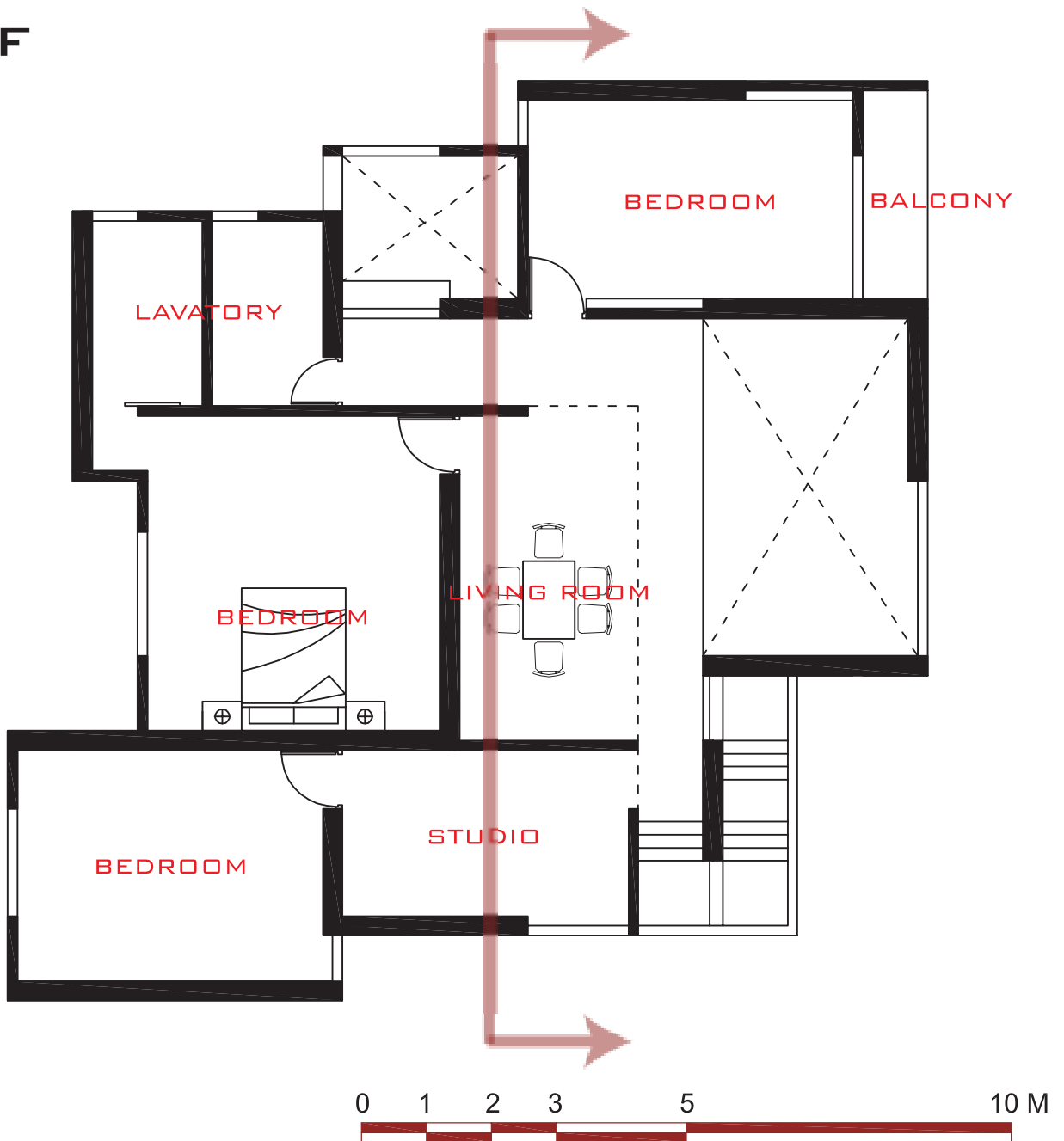
1 F

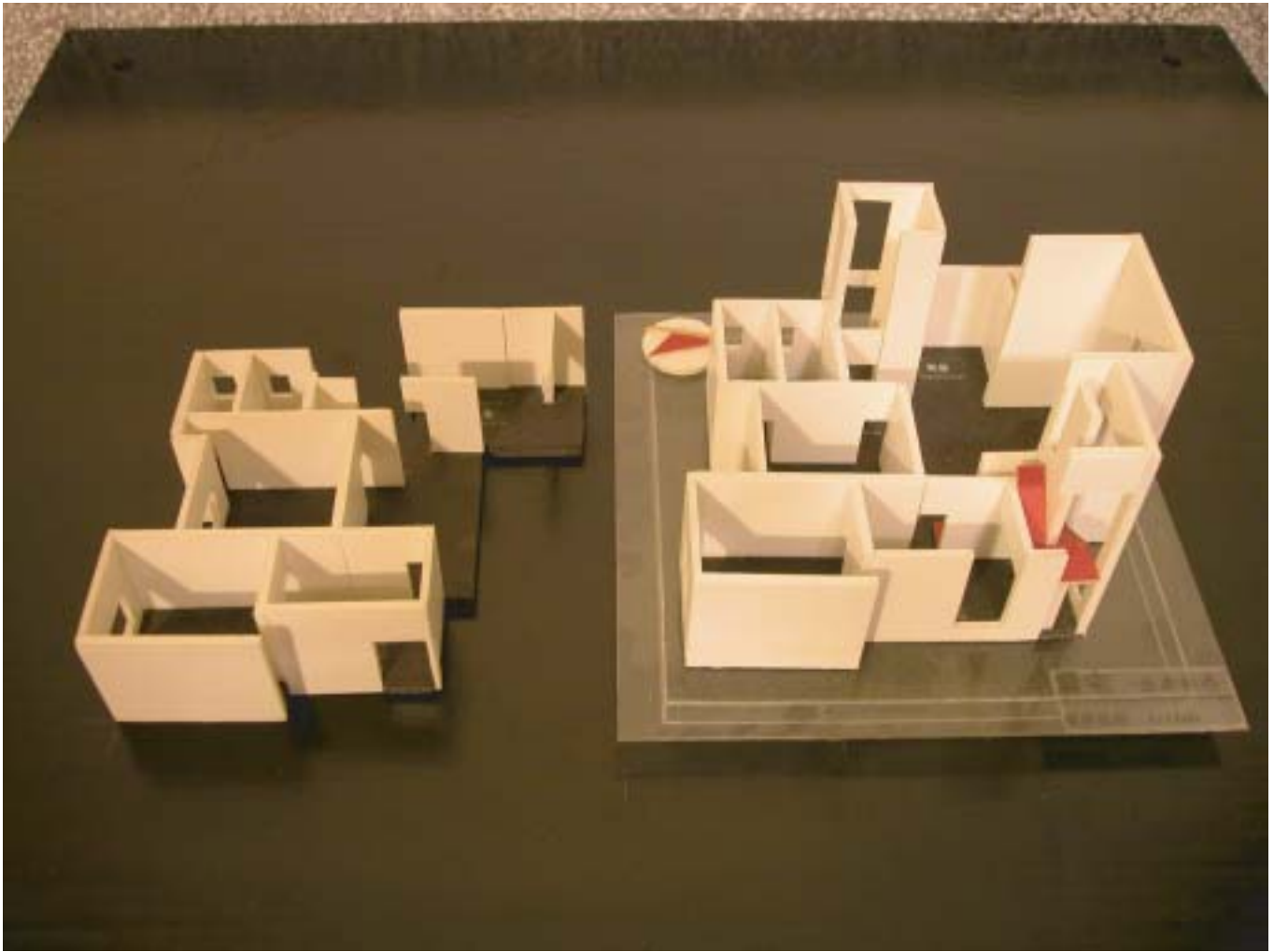


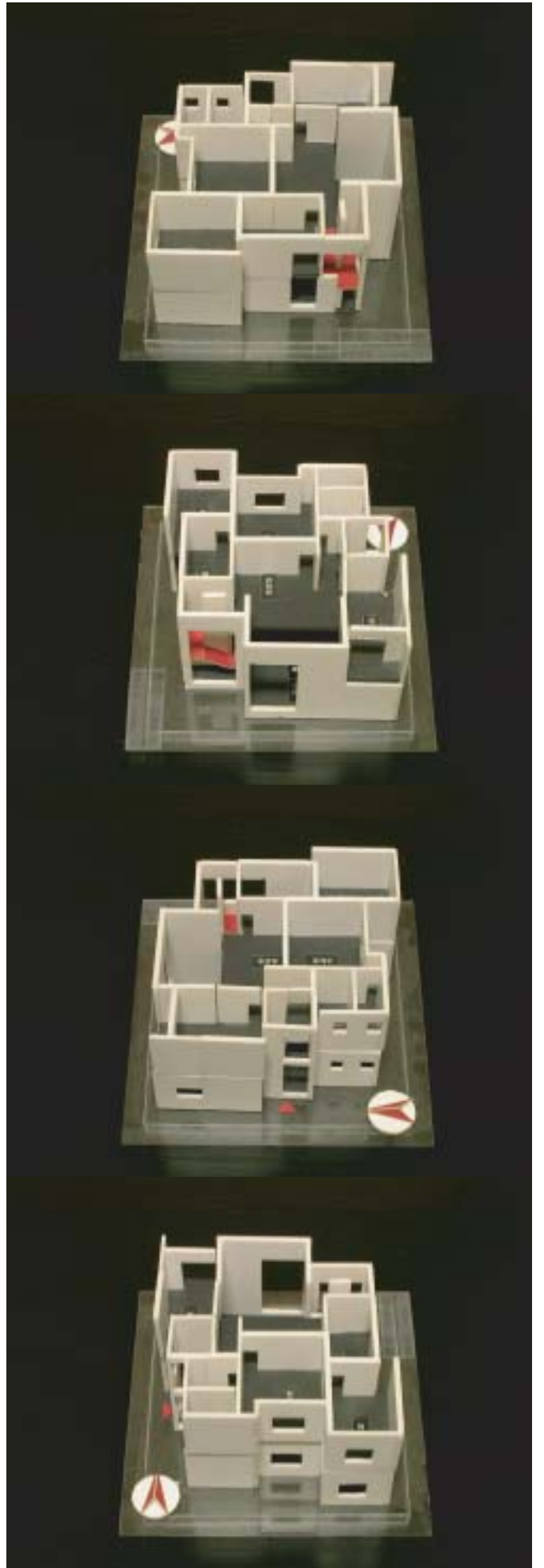
剖面示意



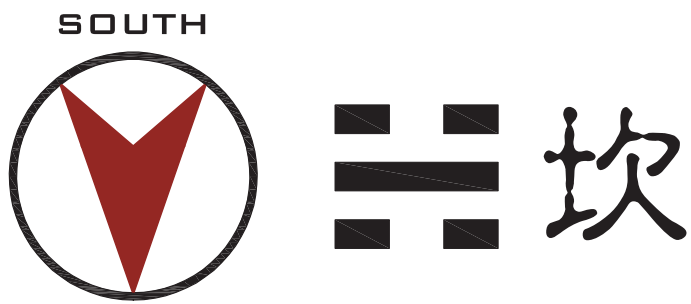
2F



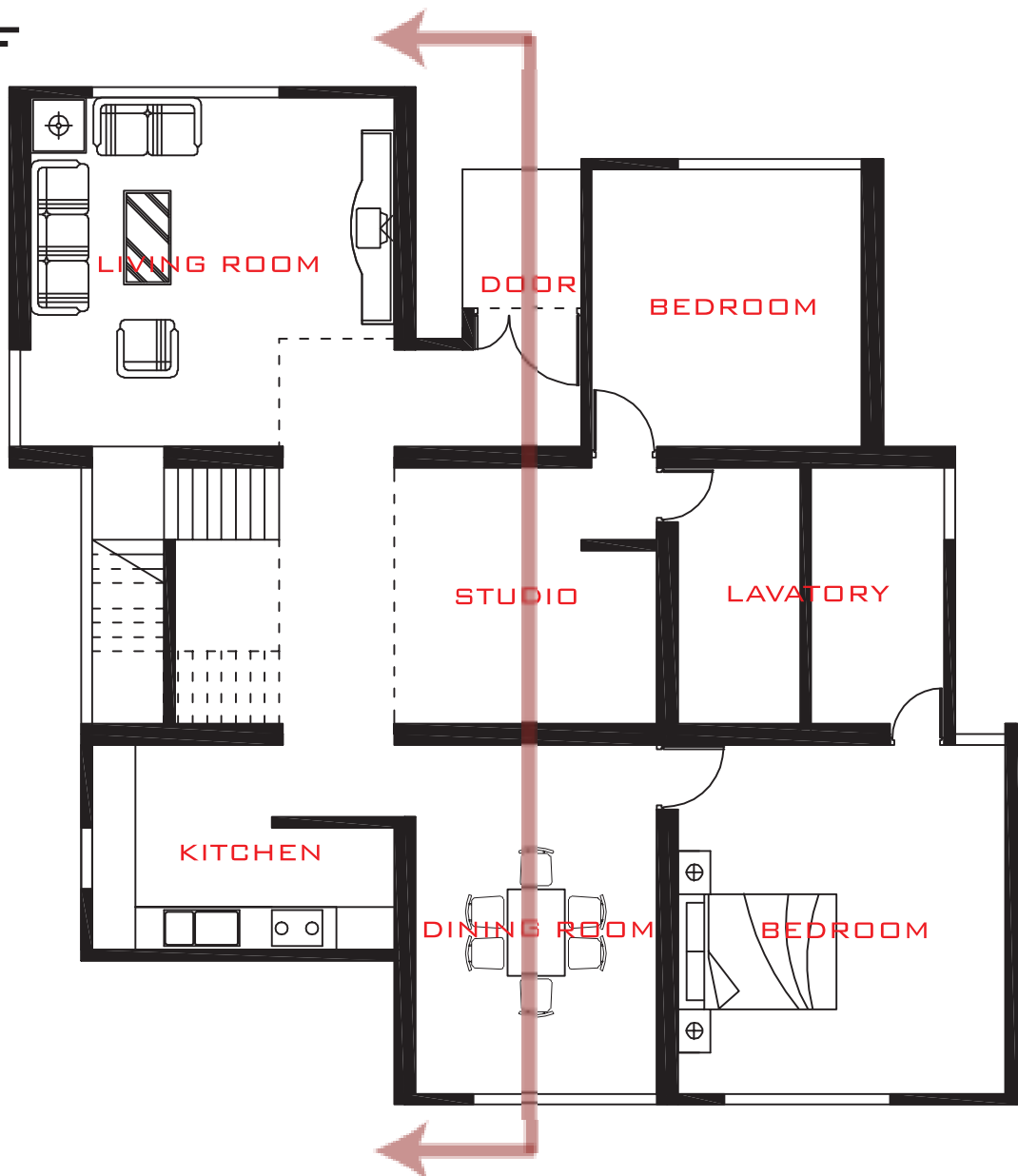




## B. 標準格局



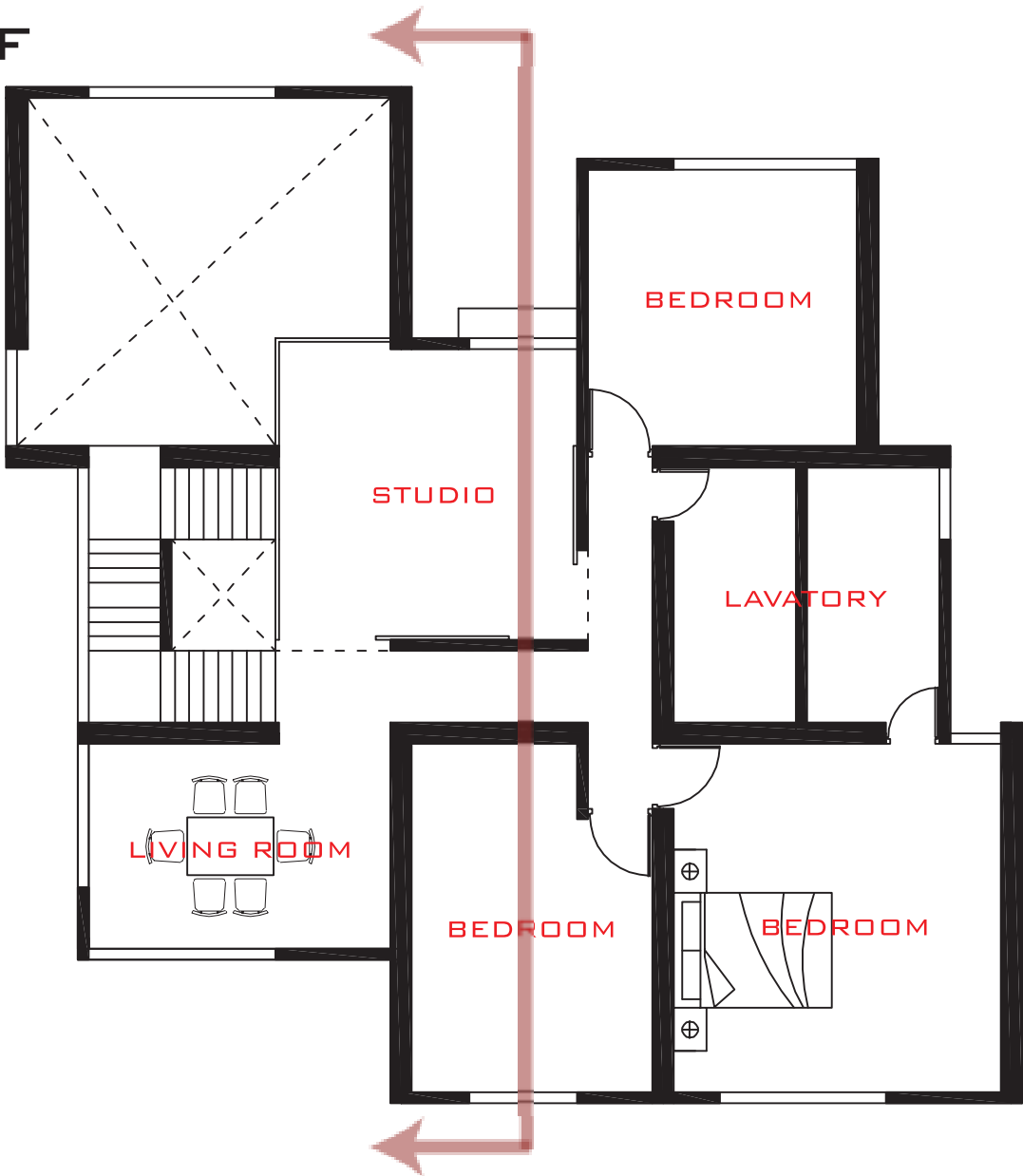
1 F

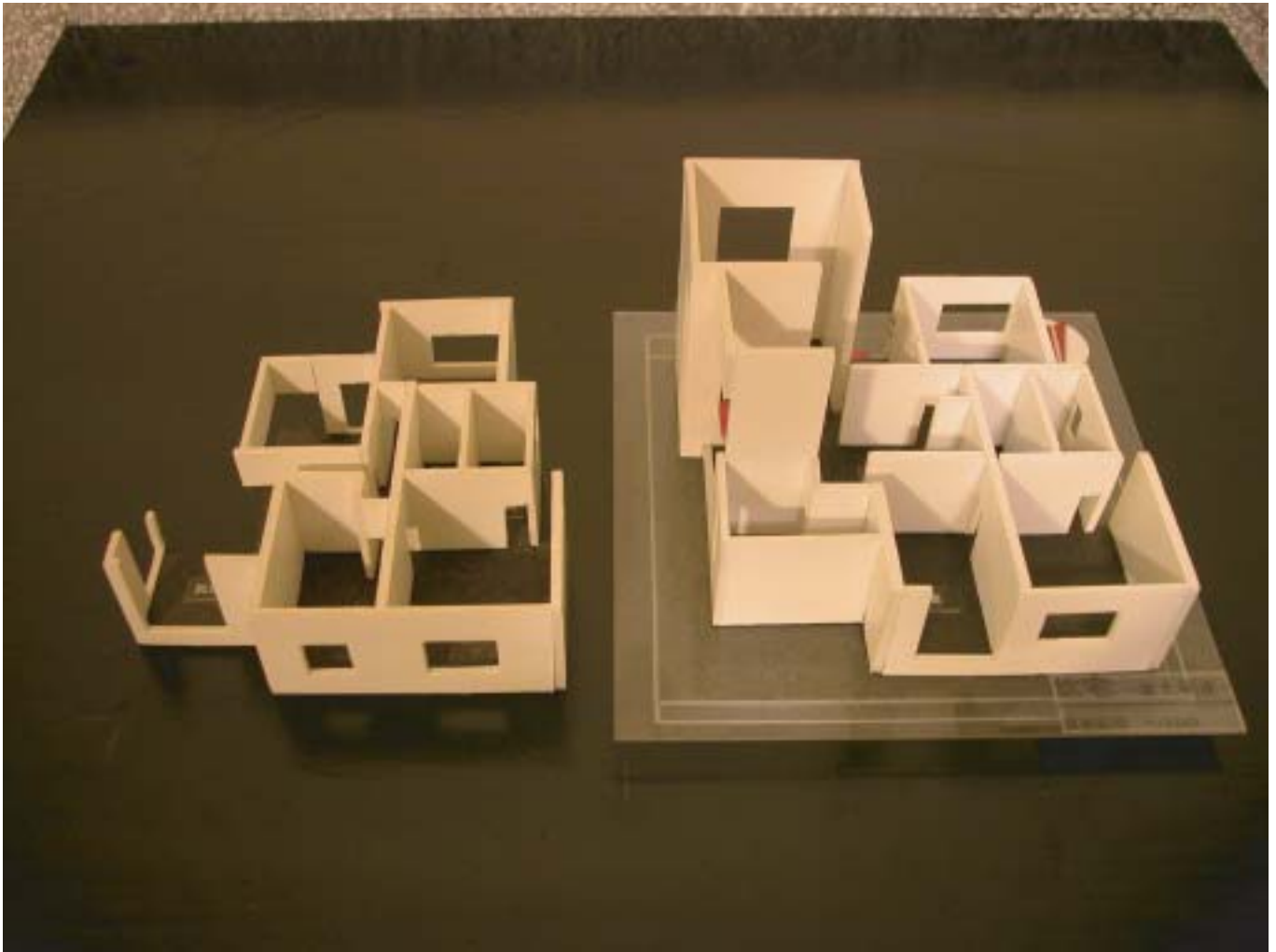


剖面示意

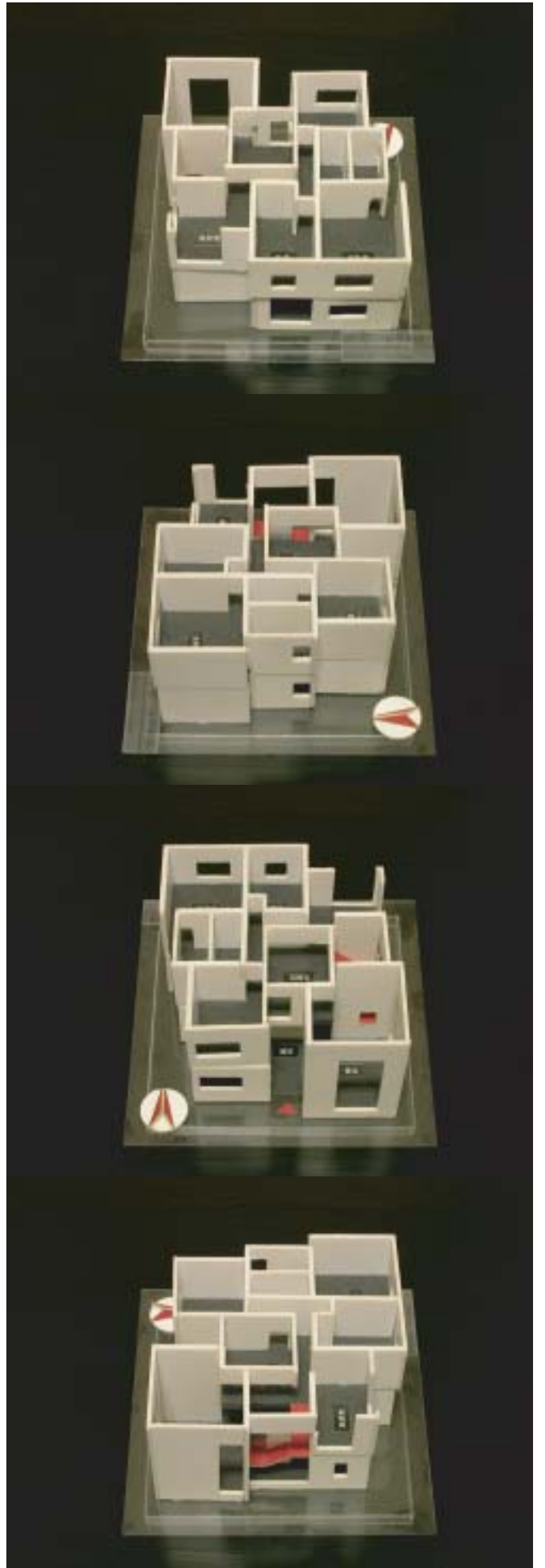


2F







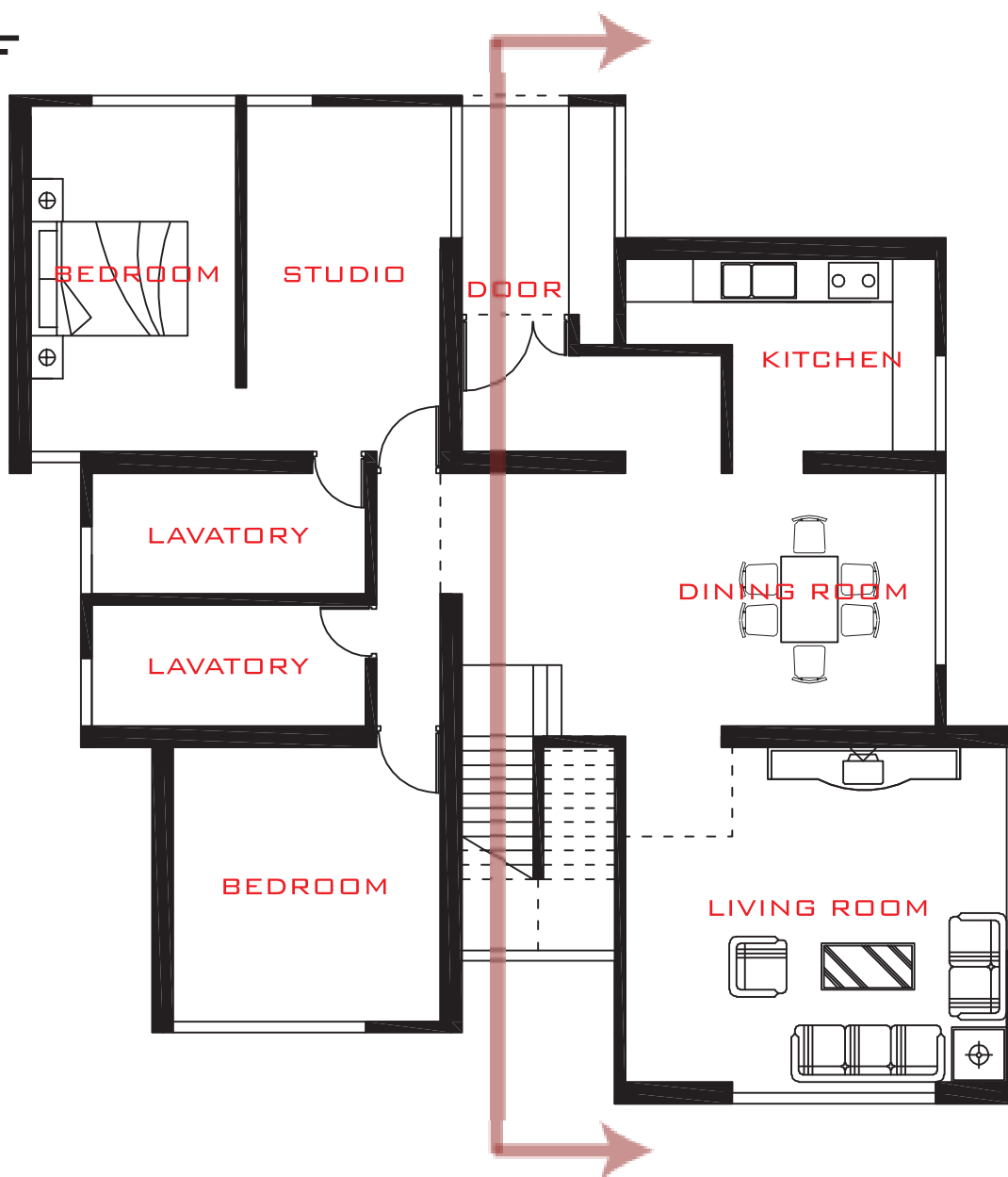


## B. 標準格局

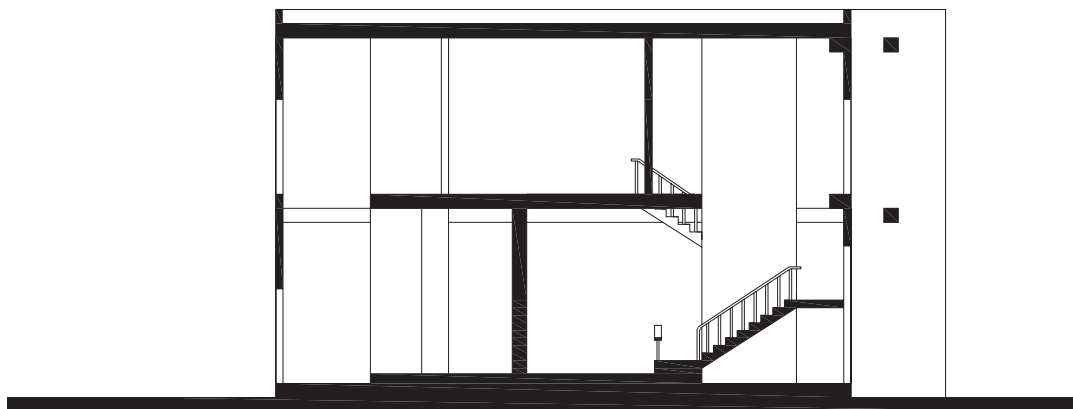


# 三 離

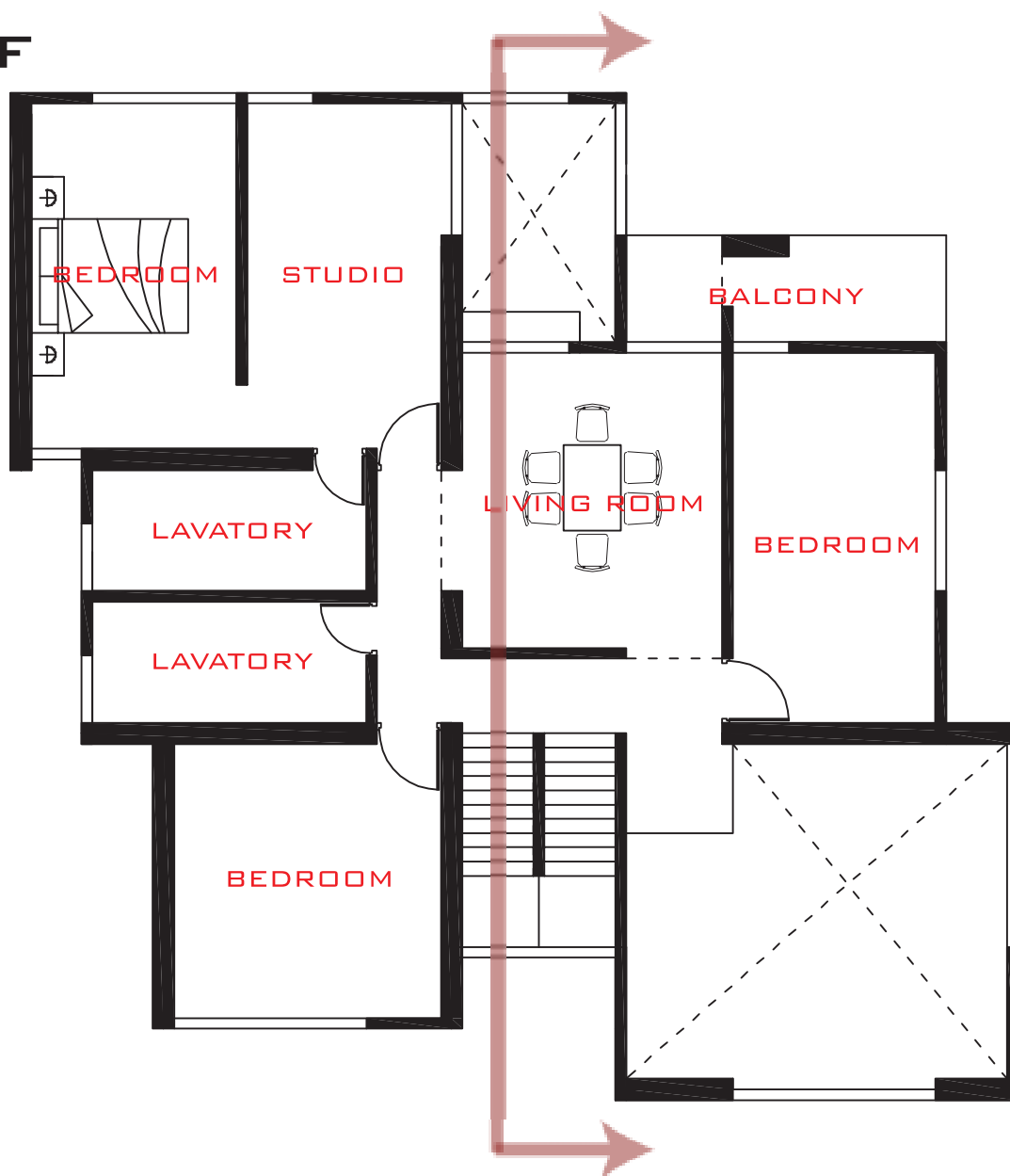
1 F

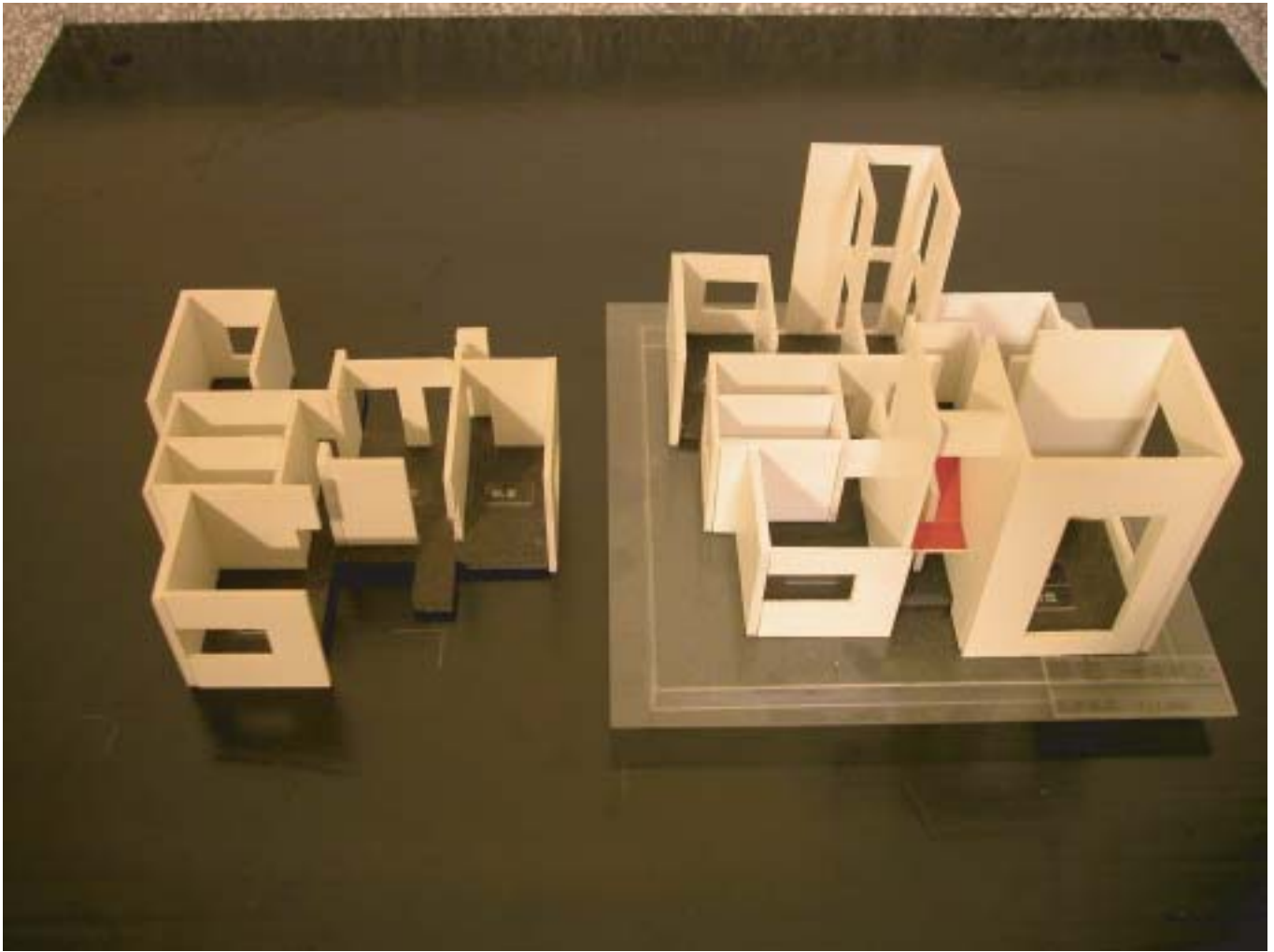


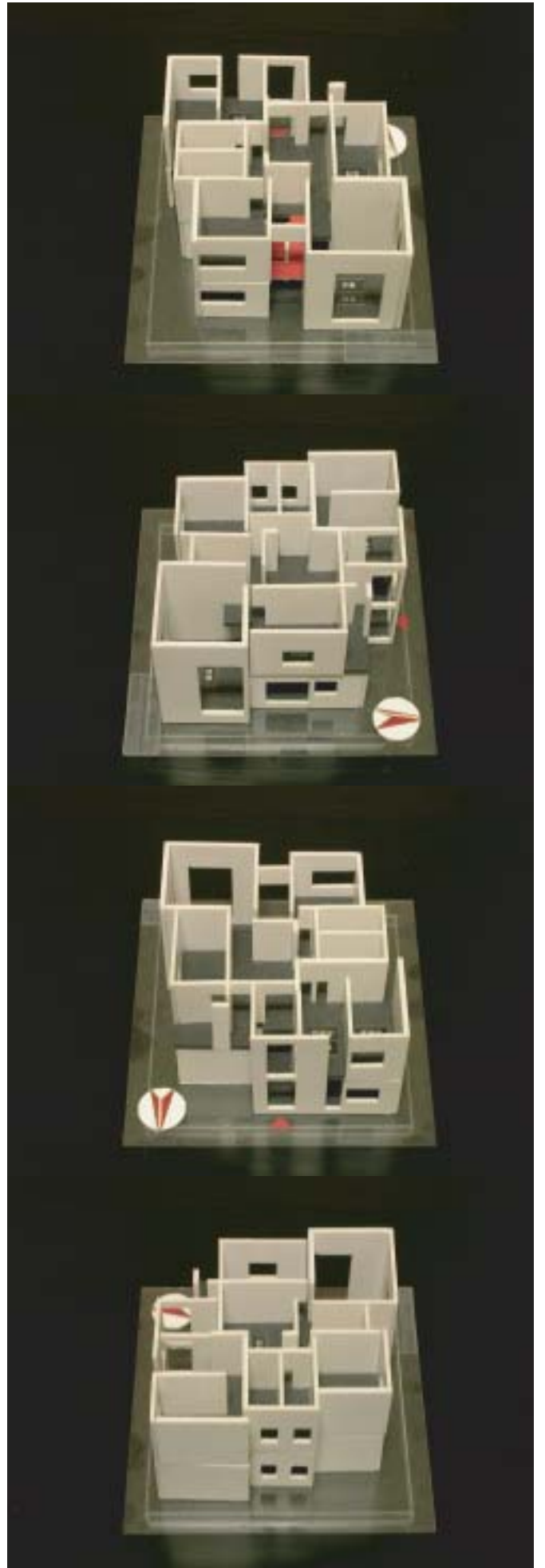
剖面示意



2F





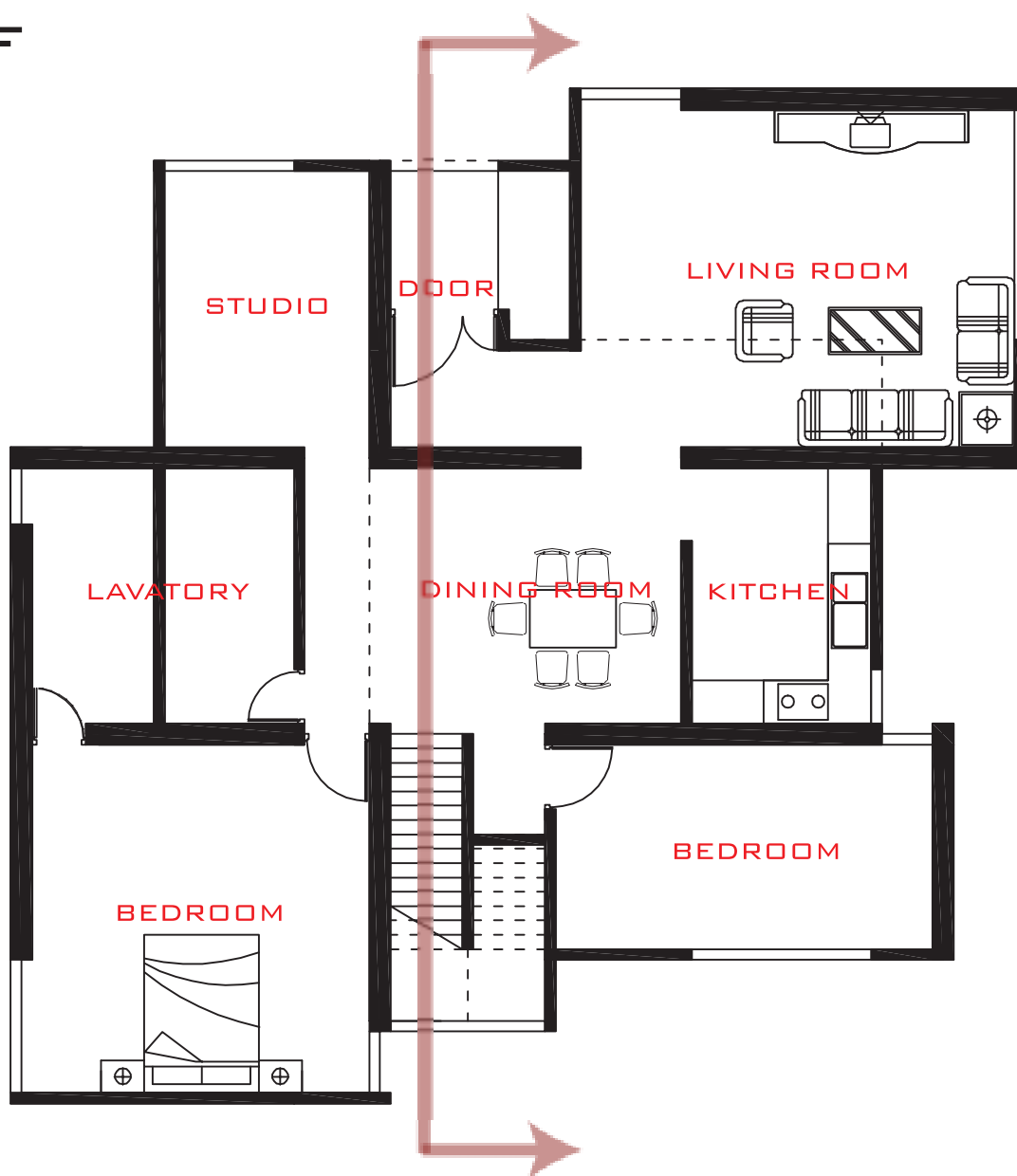


## B. 標準格局

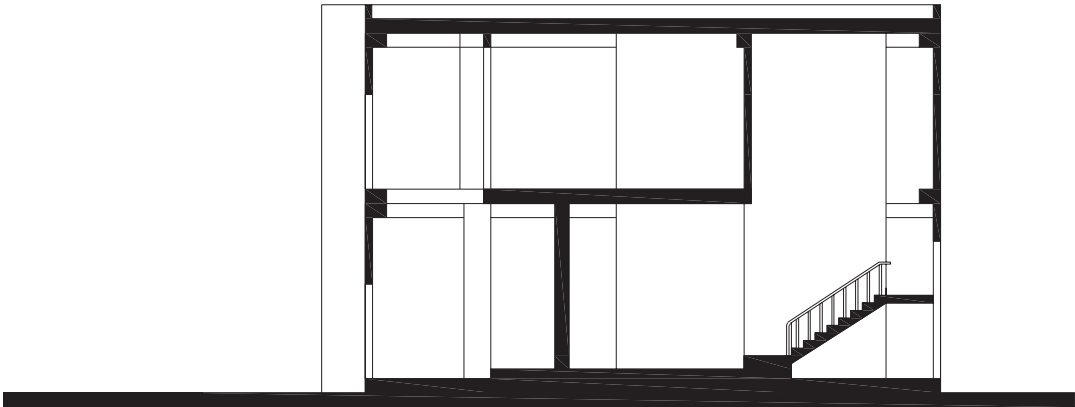


三 兗

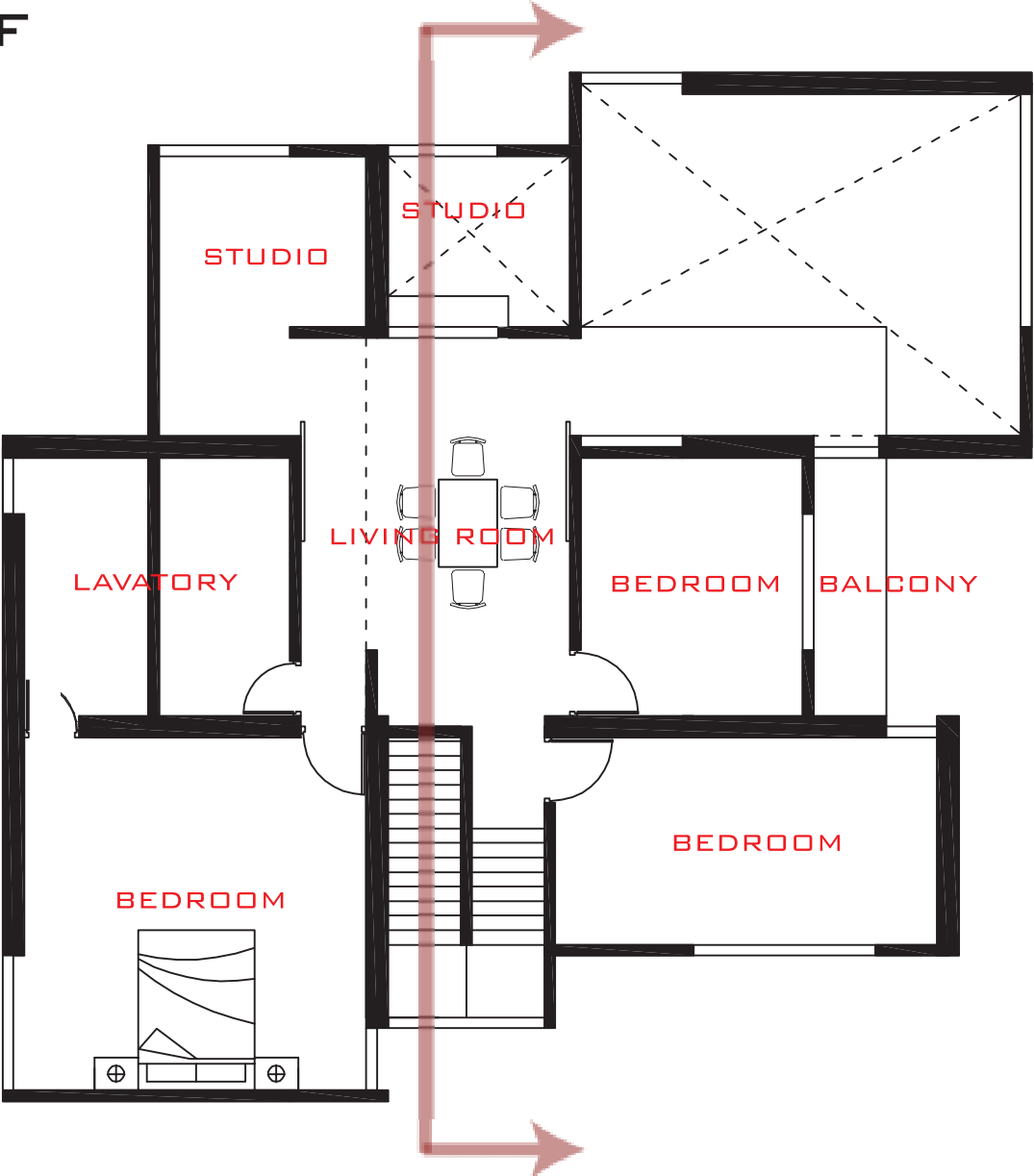
1 F

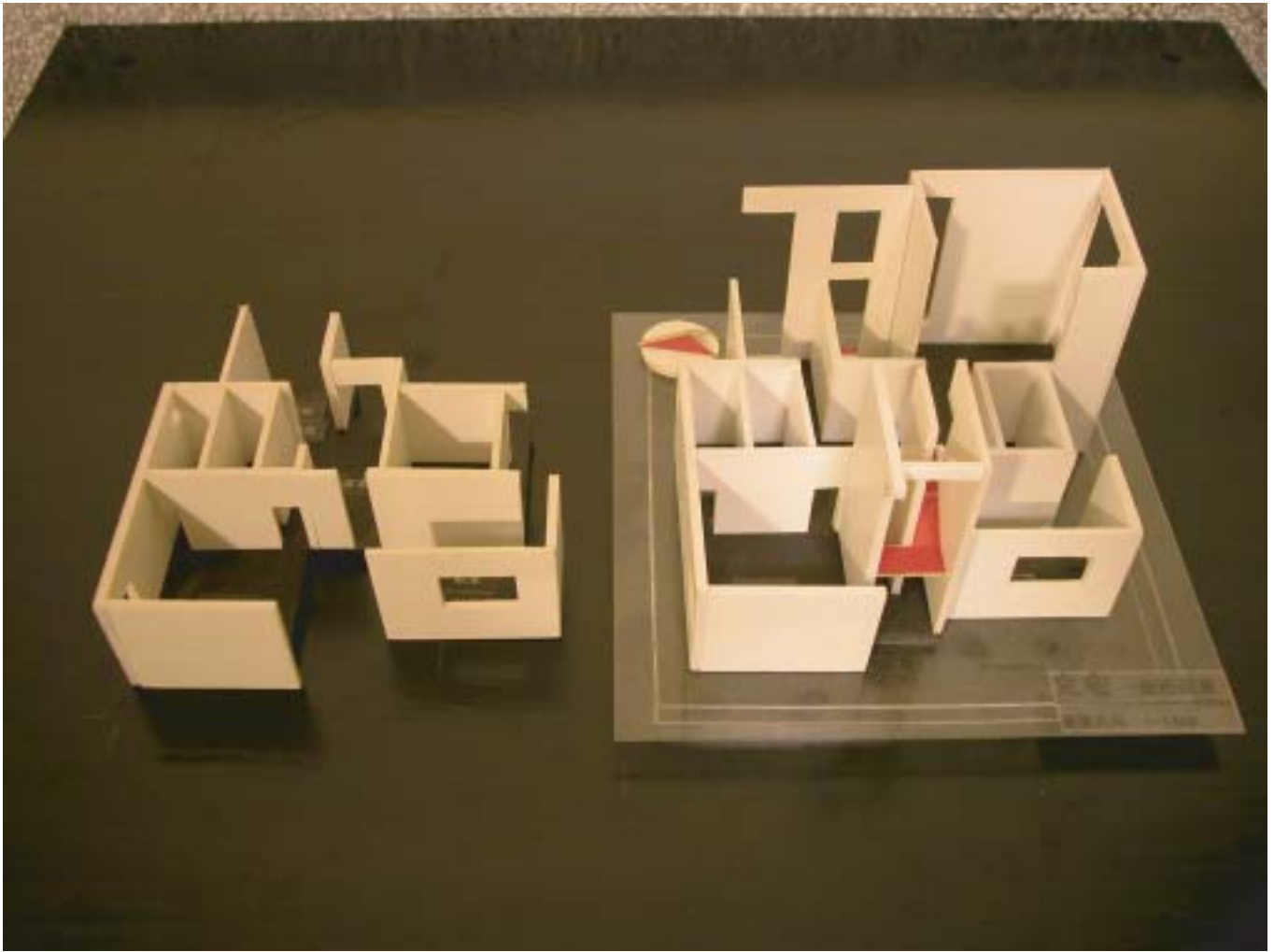


剖面示意

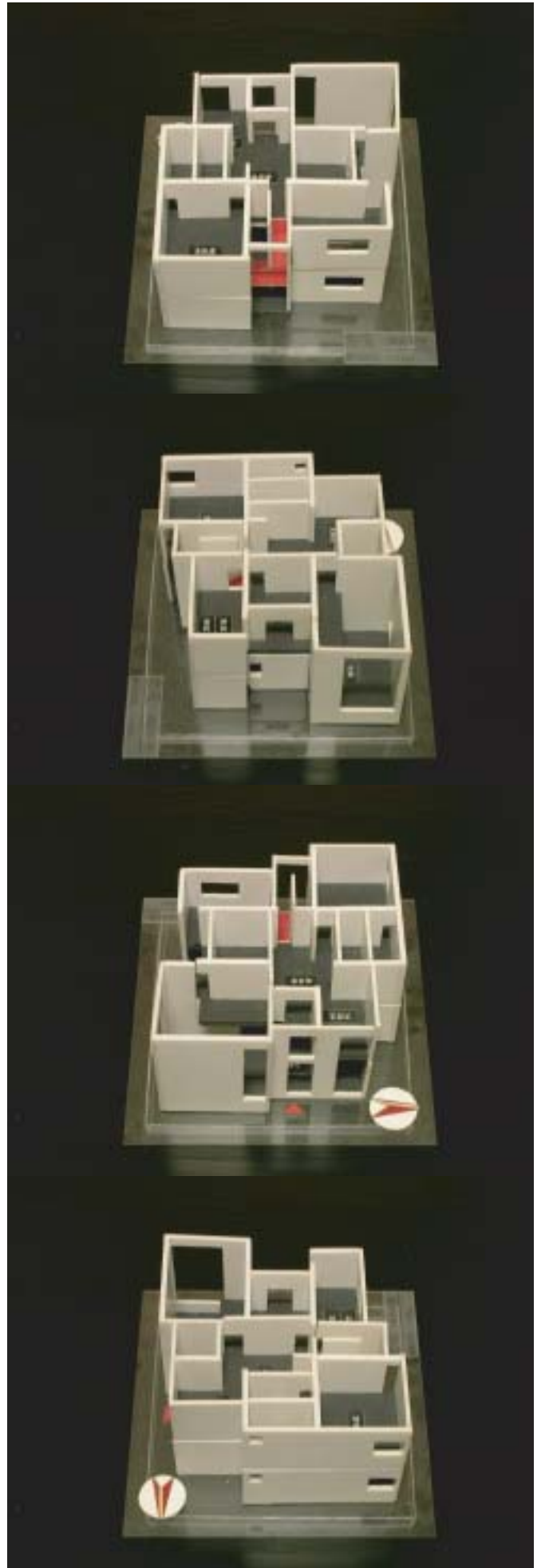


2F










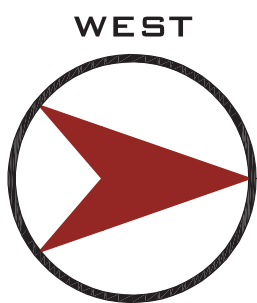




### 第三式 連棟格局設計

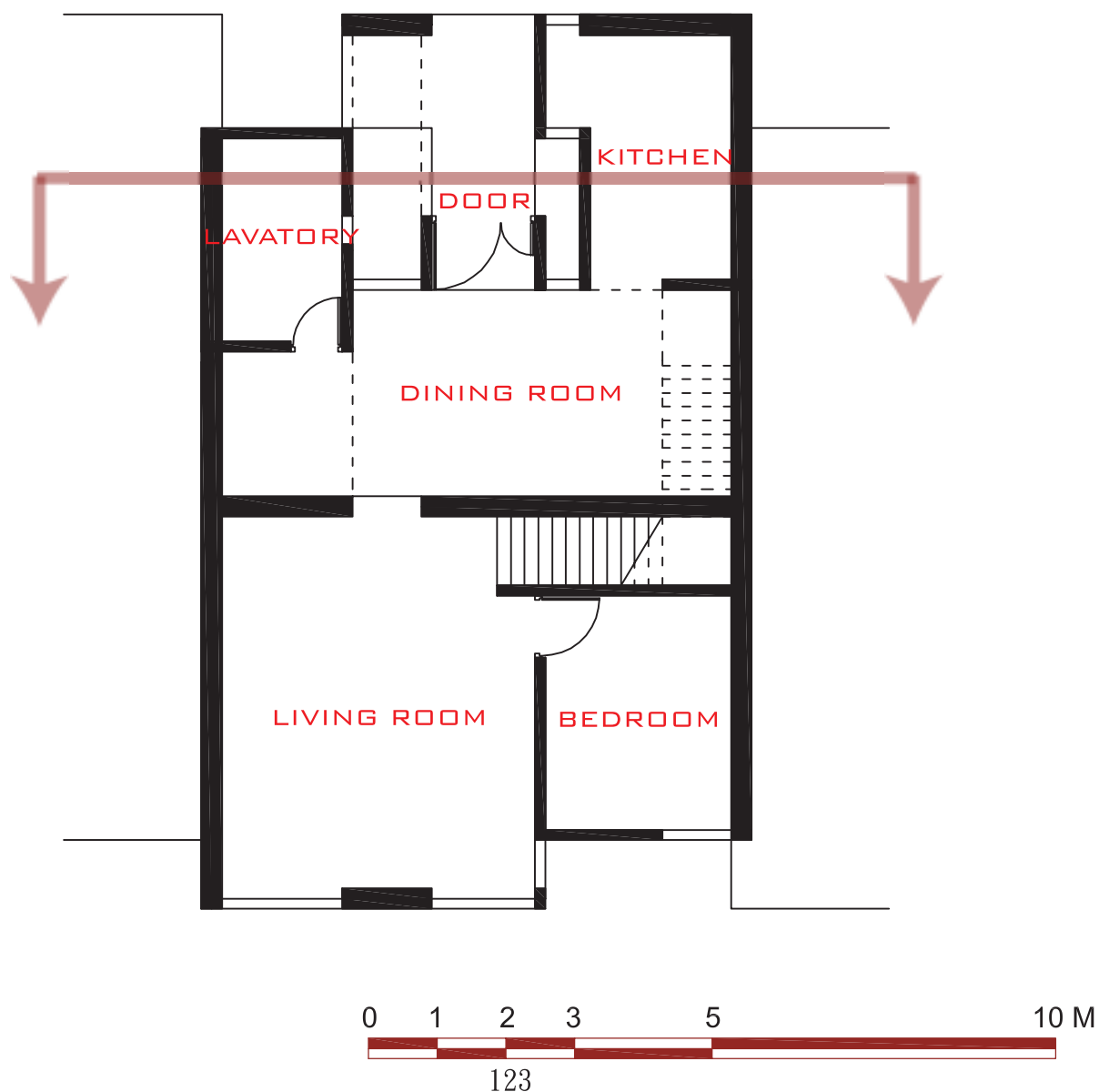
連棟格局的設定是模擬台灣最常見的街屋，以前後開口的型式，兩側無法採光，在此限制條件下，設法維持既有的格局特色，但許多部份因應風水設計準則而需有所調整，同時也產生其他與風水系統相互衝突的狀況，此節的設計結果在於針對這些條件進行之修正，部份空間甚至有嚴苛的尺度限制，以達到風水系統的要求標準。

C. 連棟格局



三震

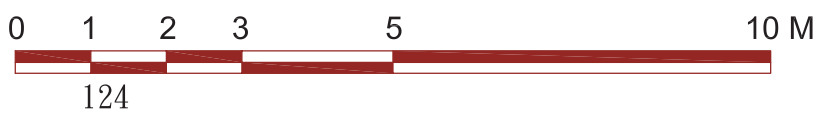
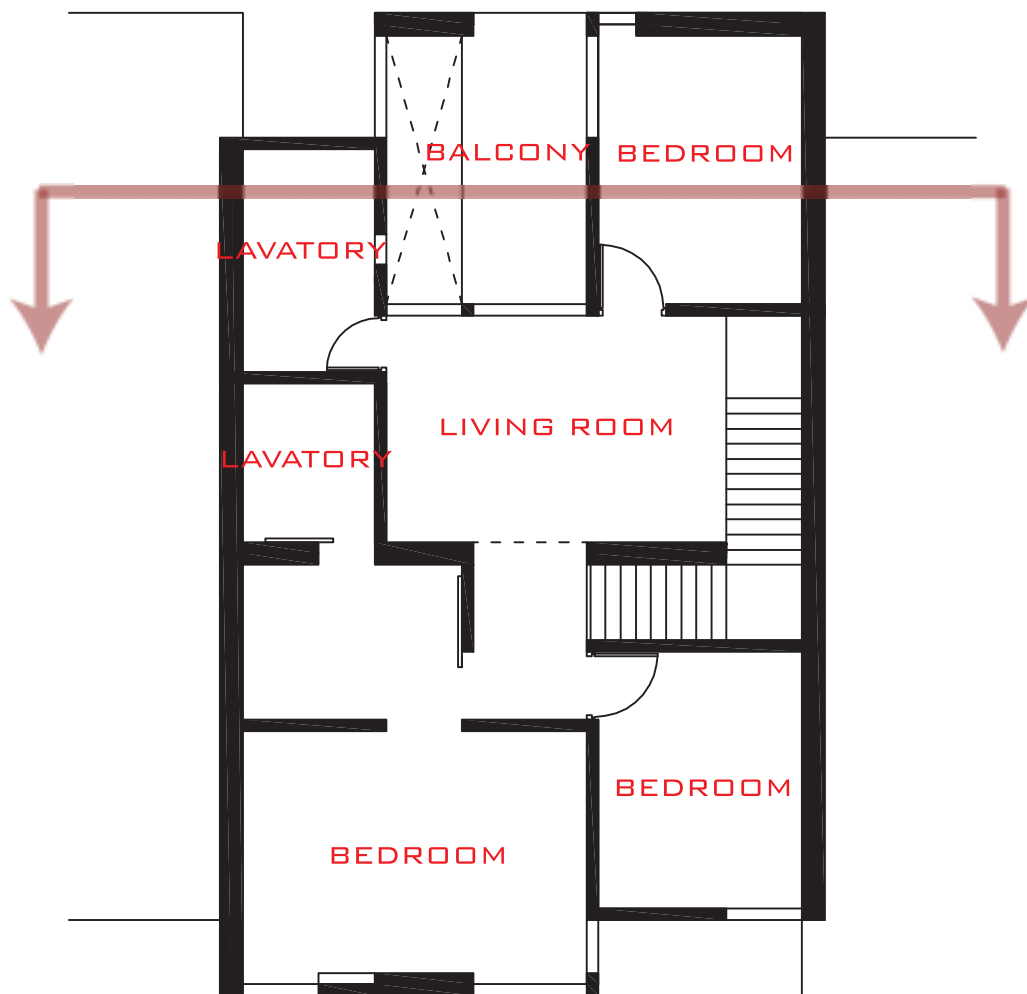
1 F

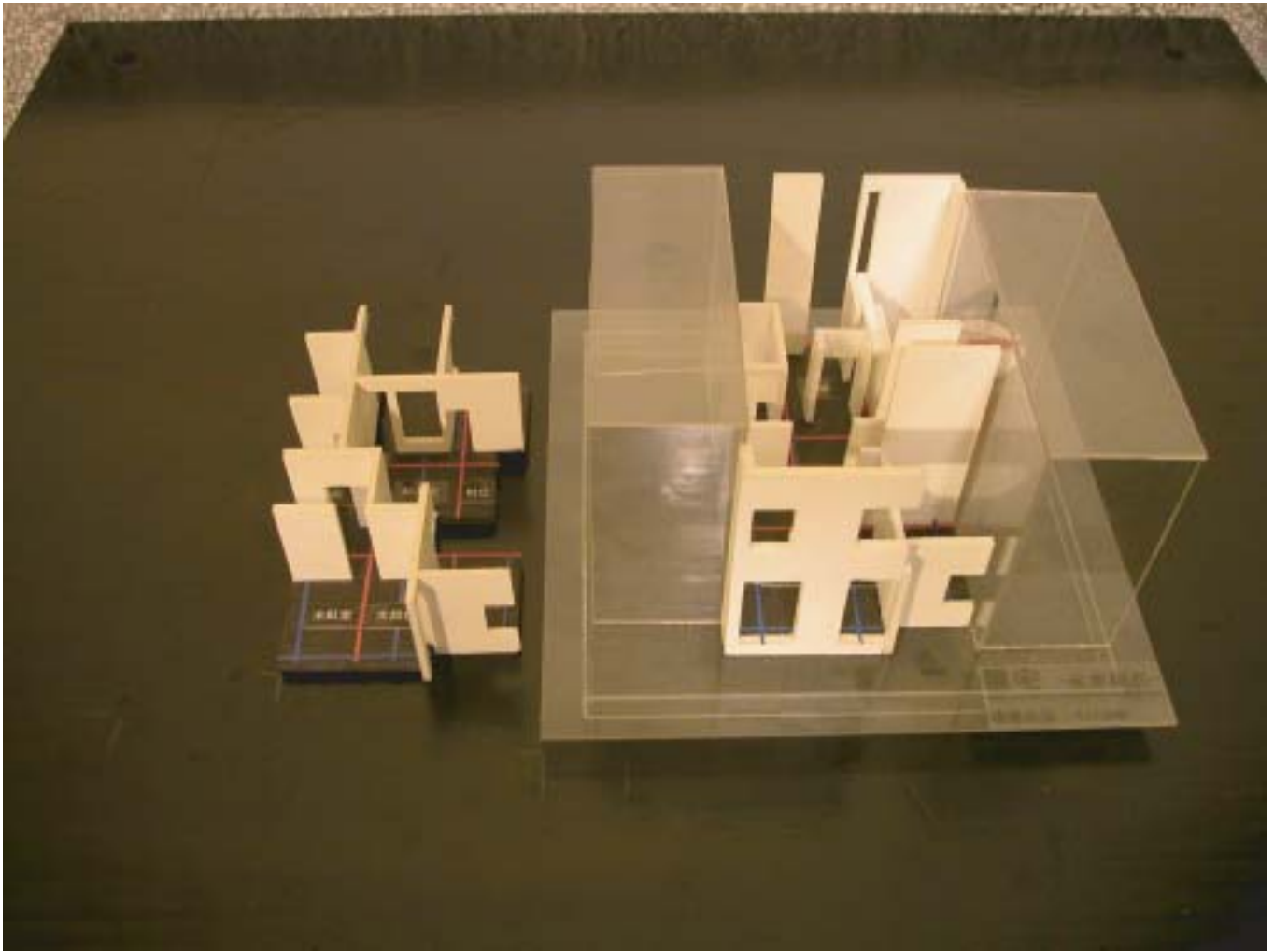


剖面示意

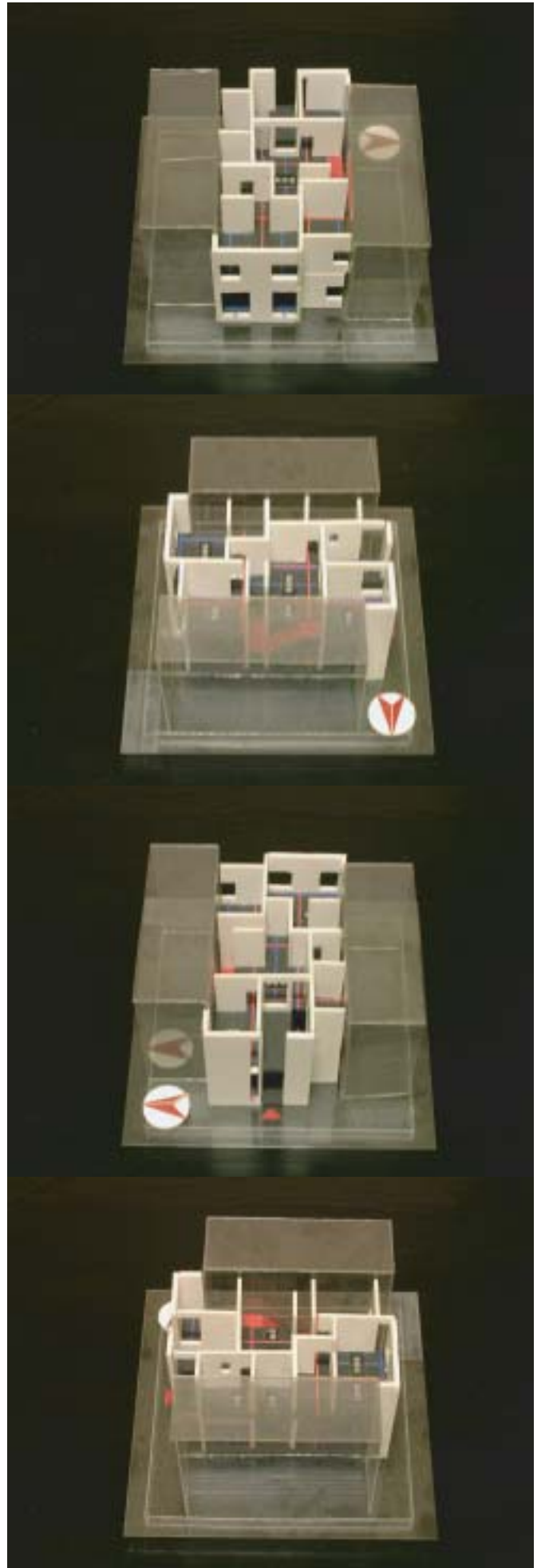


2F

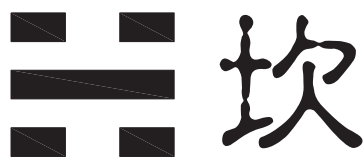




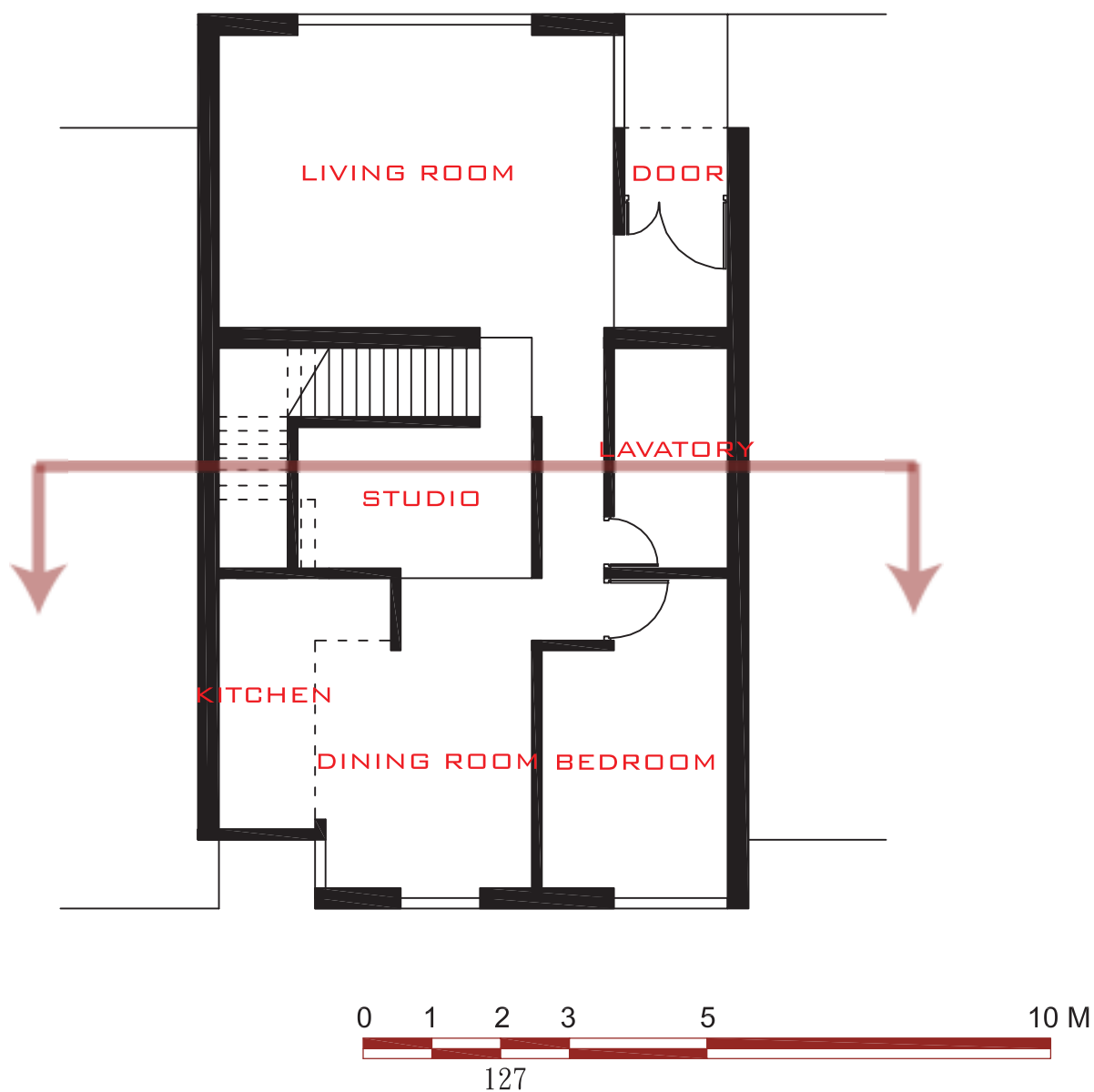




C. 連棟格局

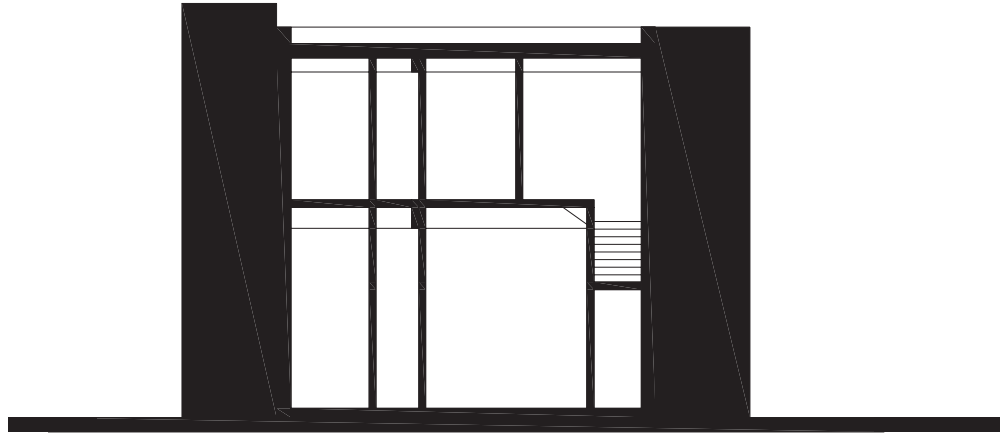


1 F

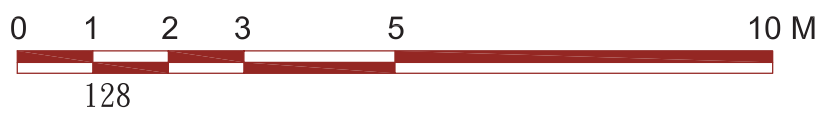
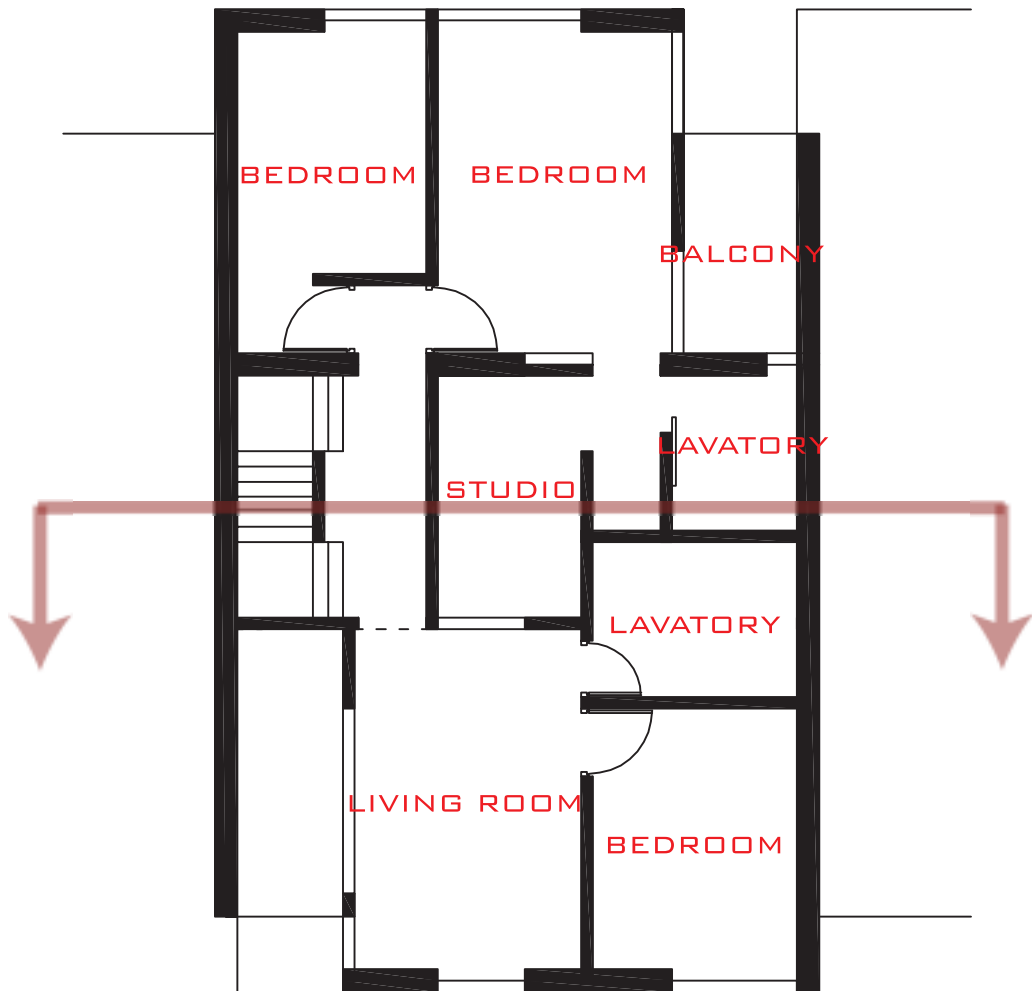


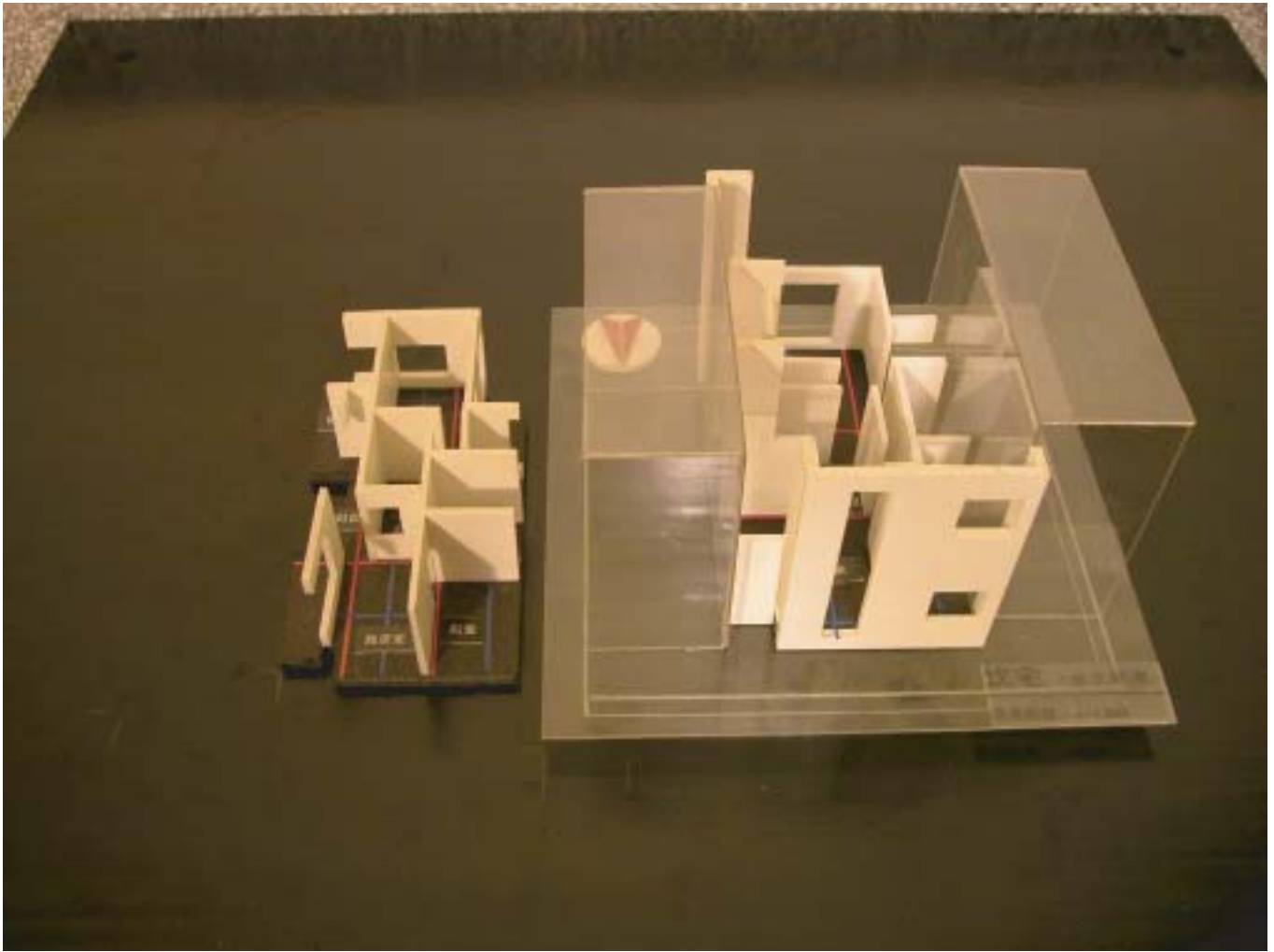


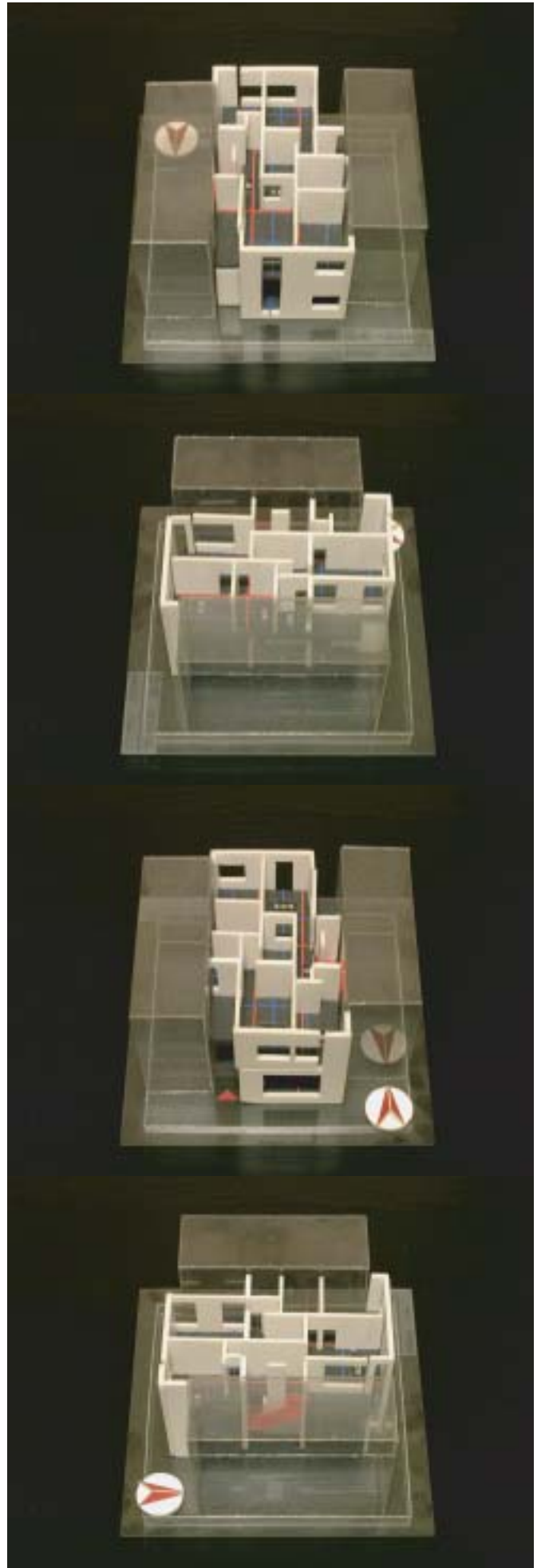
剖面示意



2F







C. 連棟格局



三離

1 F

