

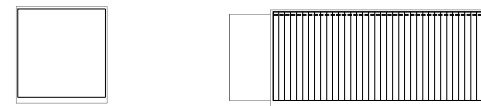
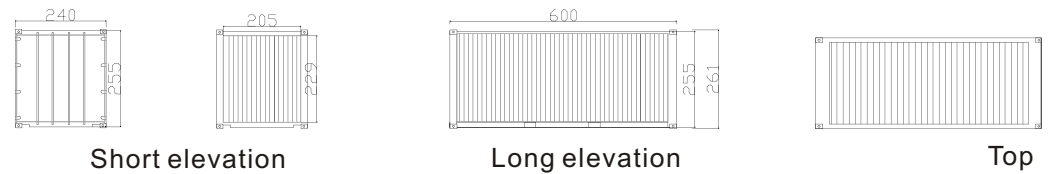
第五章【設計呈現】



5-1 Units

20' Standard Dry

將20標準貨櫃作為基本變換的空間單元尺寸。



weight: 2330kg
containing limit: 2167kg
(約9.3個空櫃)

樓地板: 13.84M²
容積: 33M³

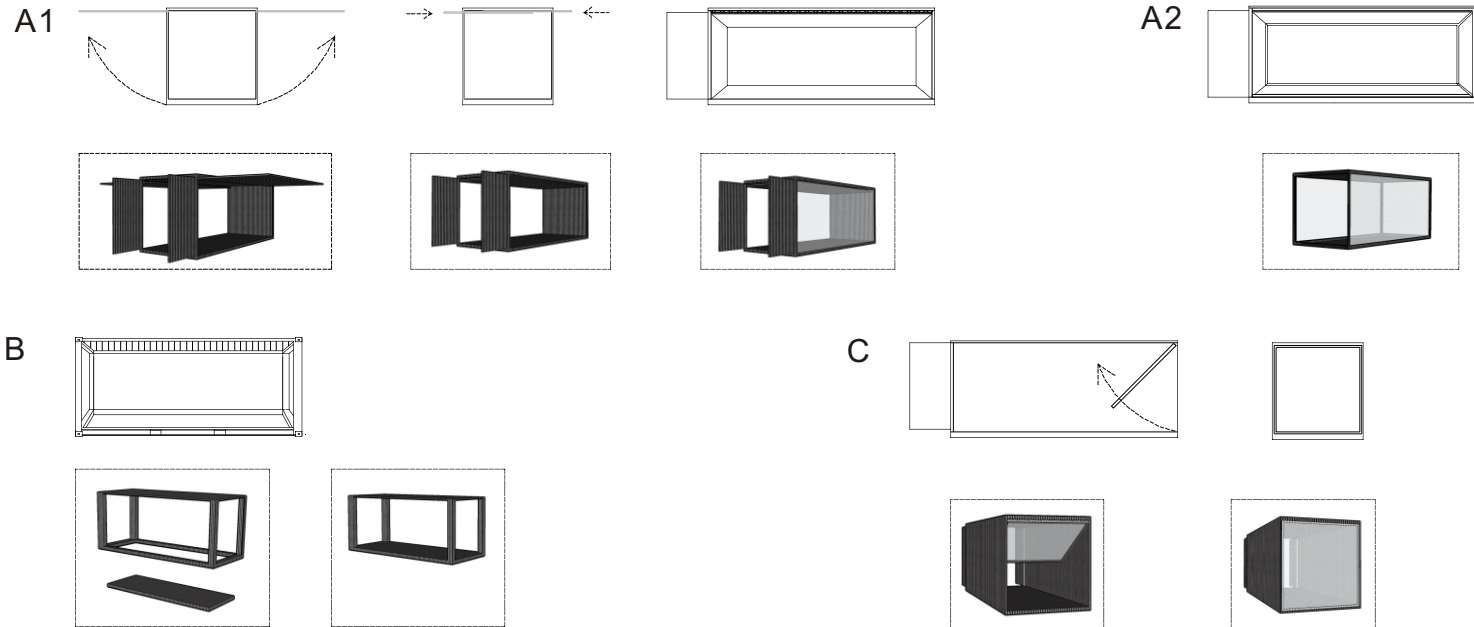
Inner space

Scale: 1/200

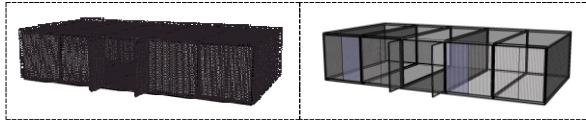
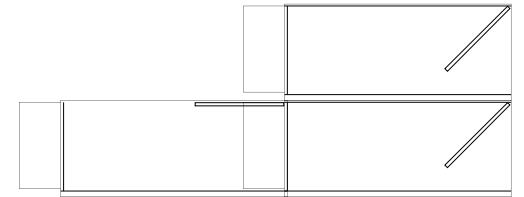
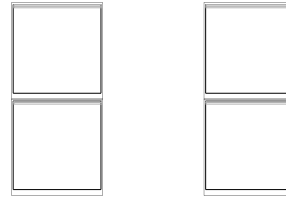
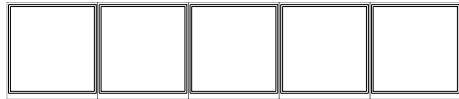
Refit-basic type

將標準櫃改裝為三種主要形式，以合乎組裝時空間機能需求。

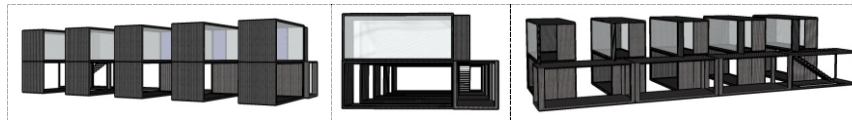
將其做不同組合後可形成適用不同空間需求之形式。貨櫃具有moveable的特質，可使配置不被定型，且可contain有功能性的空間，作為partition時不同於展板，其內部空間可形成通道。成串成塊的貨櫃組合在場地上形成如同城市裡的街廓。



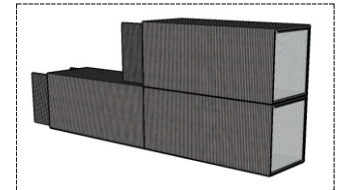
[Composition]



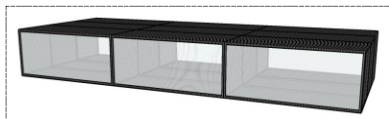
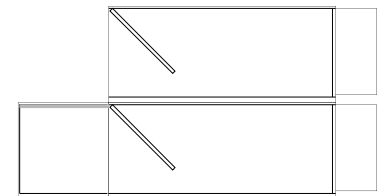
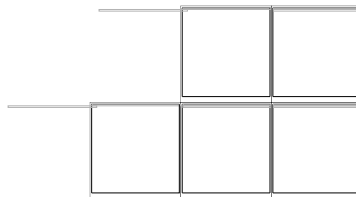
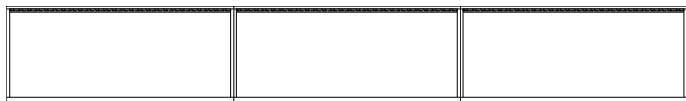
A1+A1+A1+A1+A1=gallery



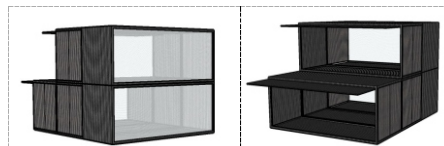
A1+A1=studio+gallery



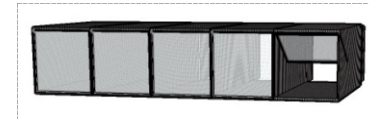
C+C+C=studio



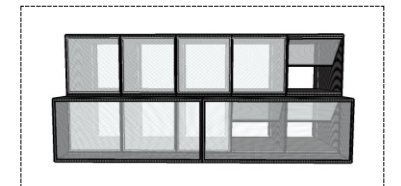
A1+A1+A1=gallery



A1+A1+A1+A1=gallery

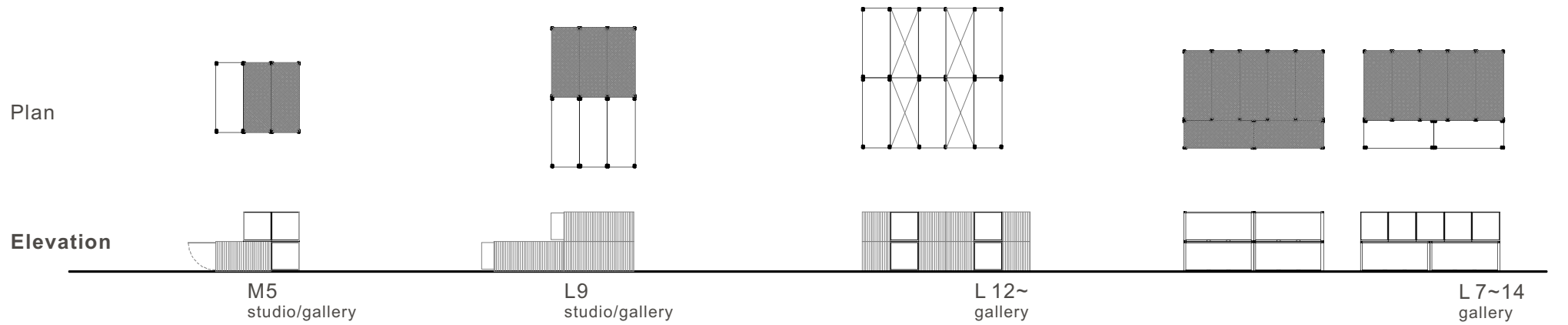
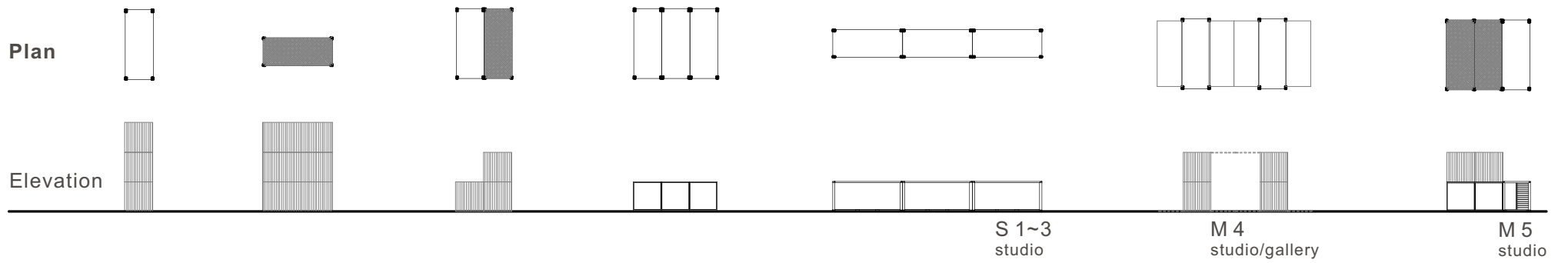


C+C+C=studio/gallery



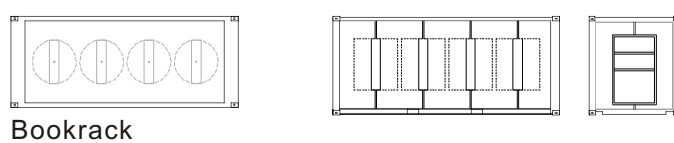
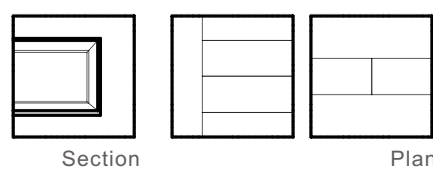
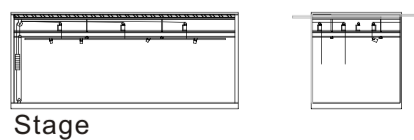
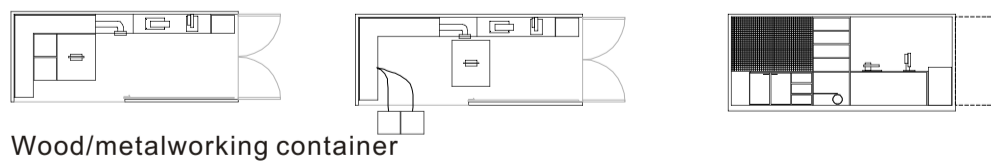
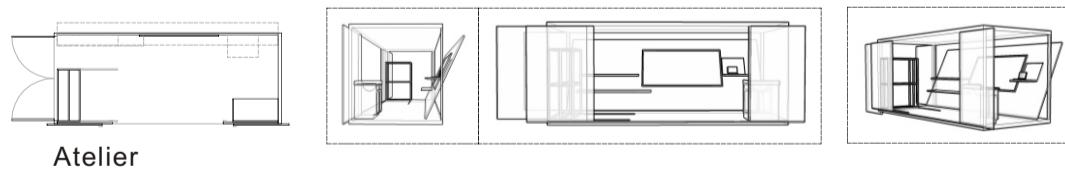
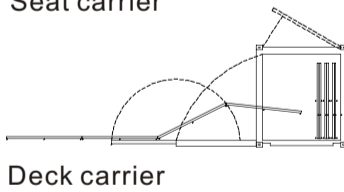
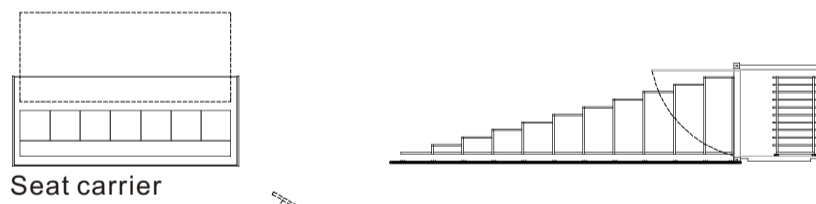
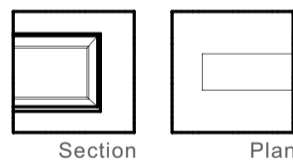
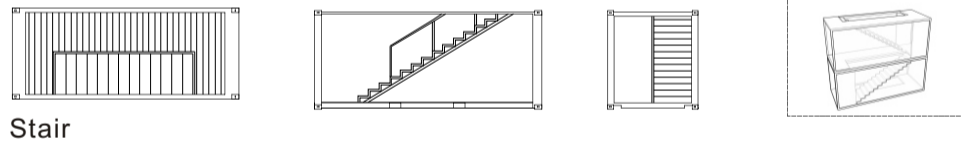
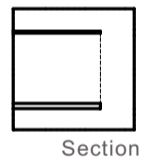
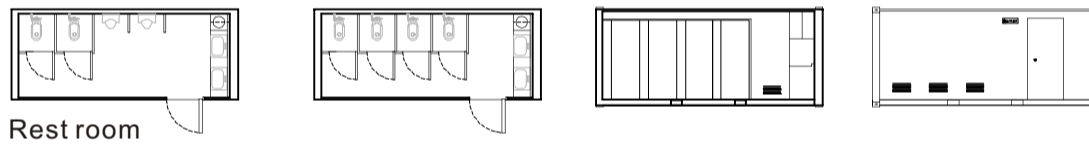
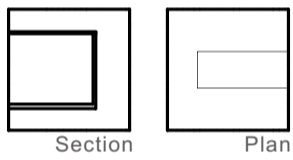
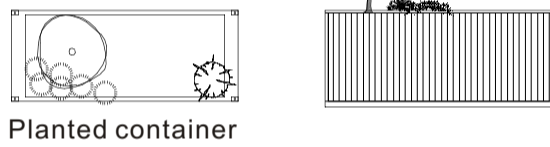
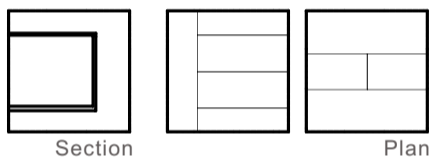
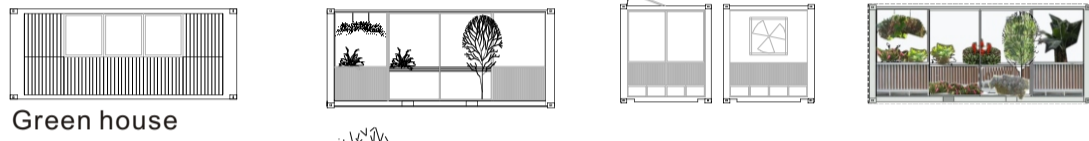
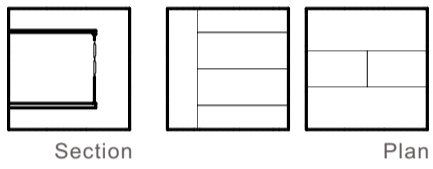
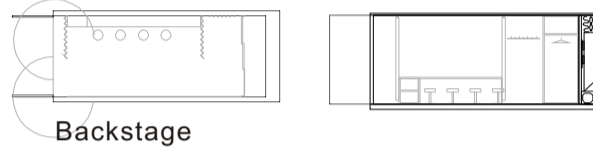
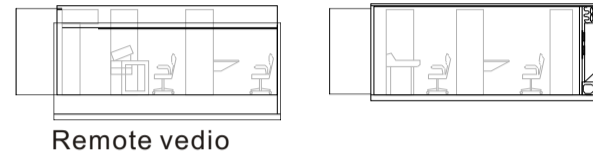
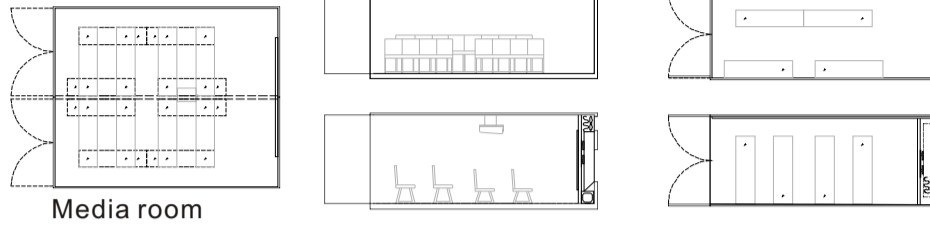
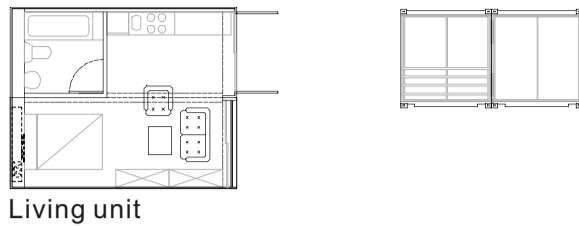
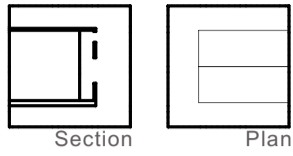
2A+5C=gallery

[Composition-units to group]



Scale:1/500

[Functional Units]

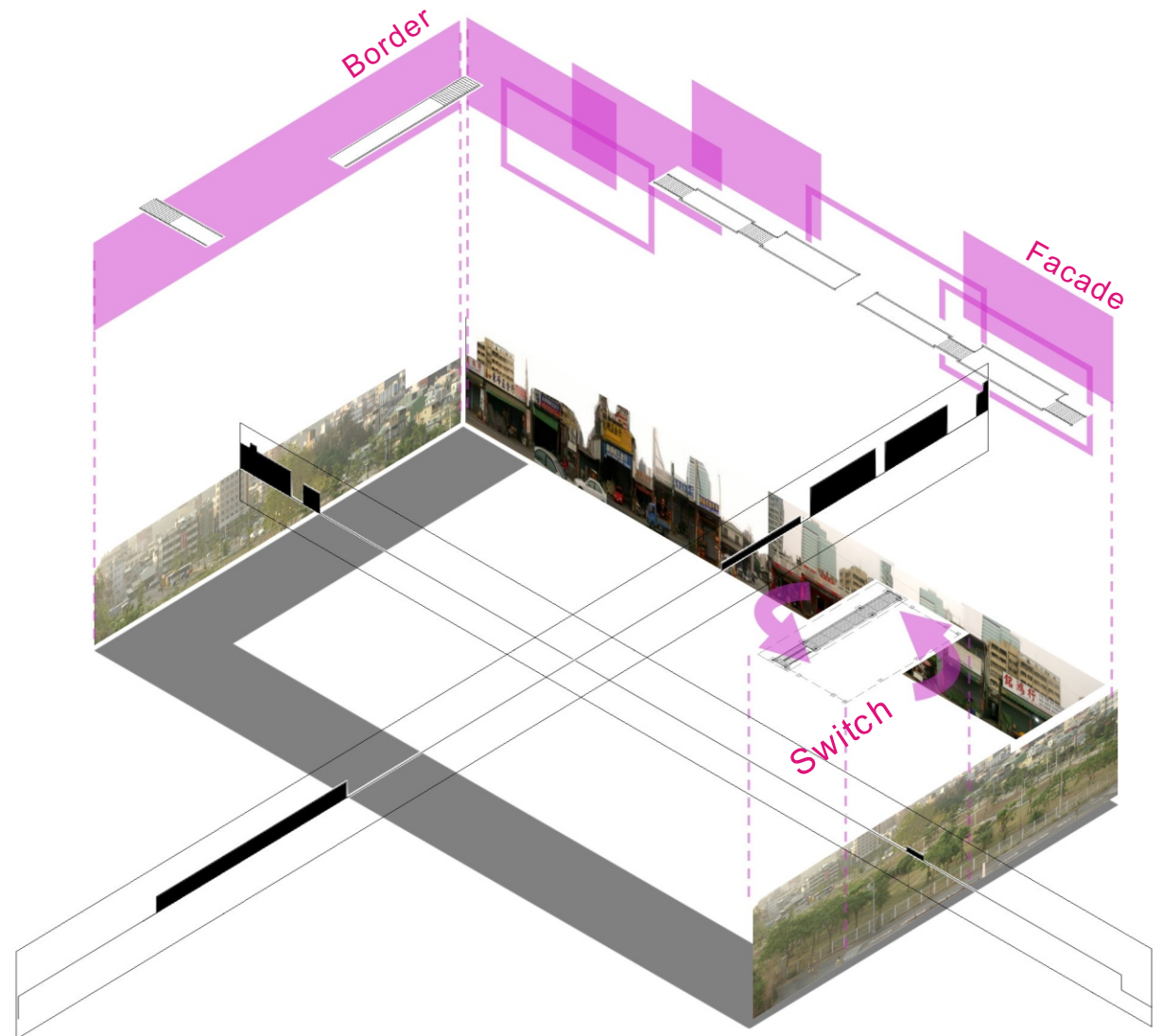


5-2 Site & Frame

Facade是面對著大五金產業街道的表情，
Border劃開了展演場地與鄰近民宅的連接，
Switch作為綠地與展演場地互動的扣環...

Frame的放置與基地環境息息相關，他們可
說是各個活動pattern幾經更換交疊後仍留下
在地表上不會變更的記號...

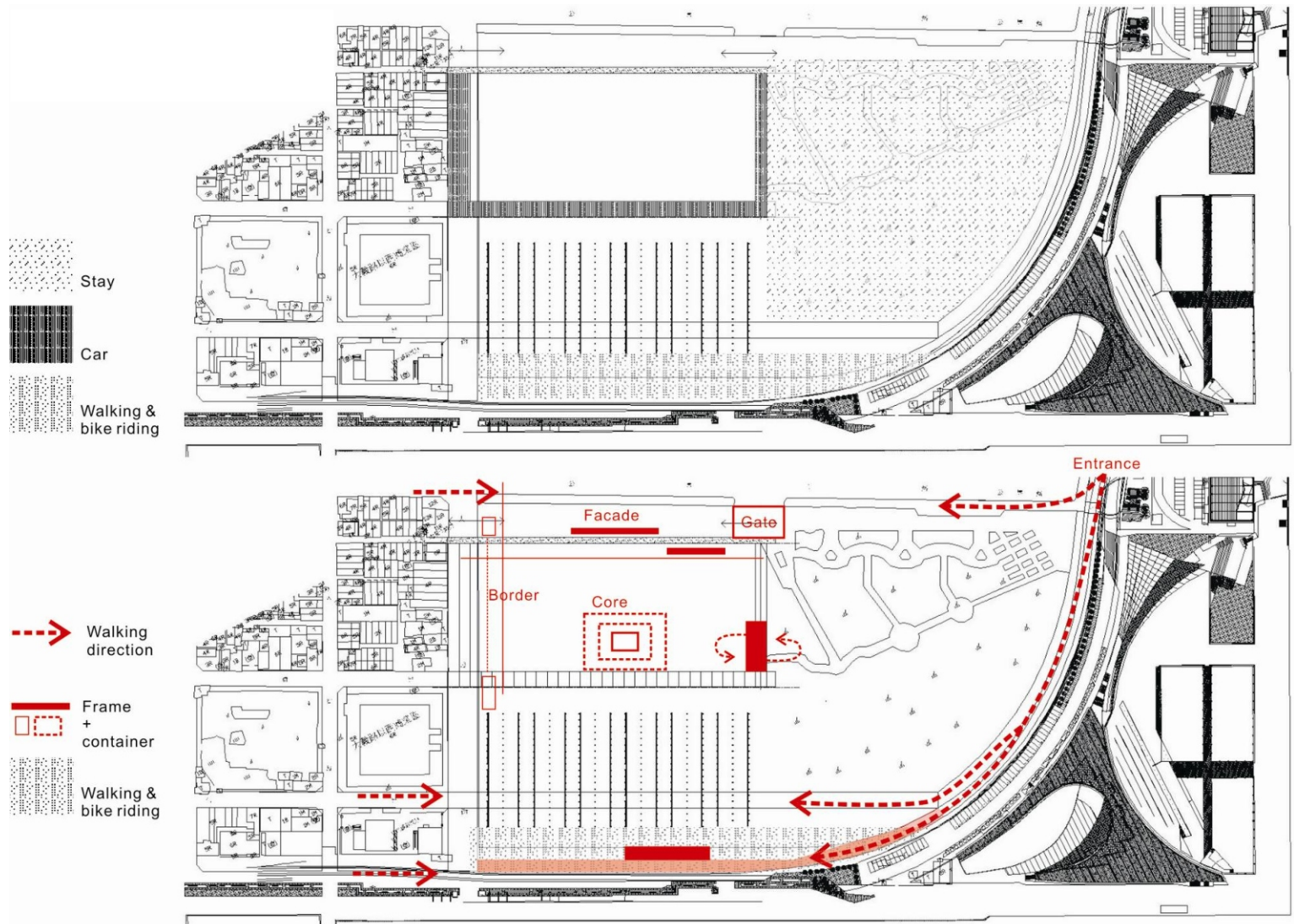
基地放空時，它們就是人們停駐的節點；活
動展開時，它們變成為貨櫃與貨櫃群間的環
節。



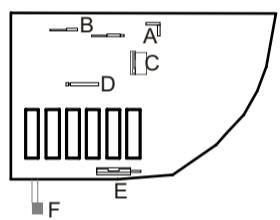
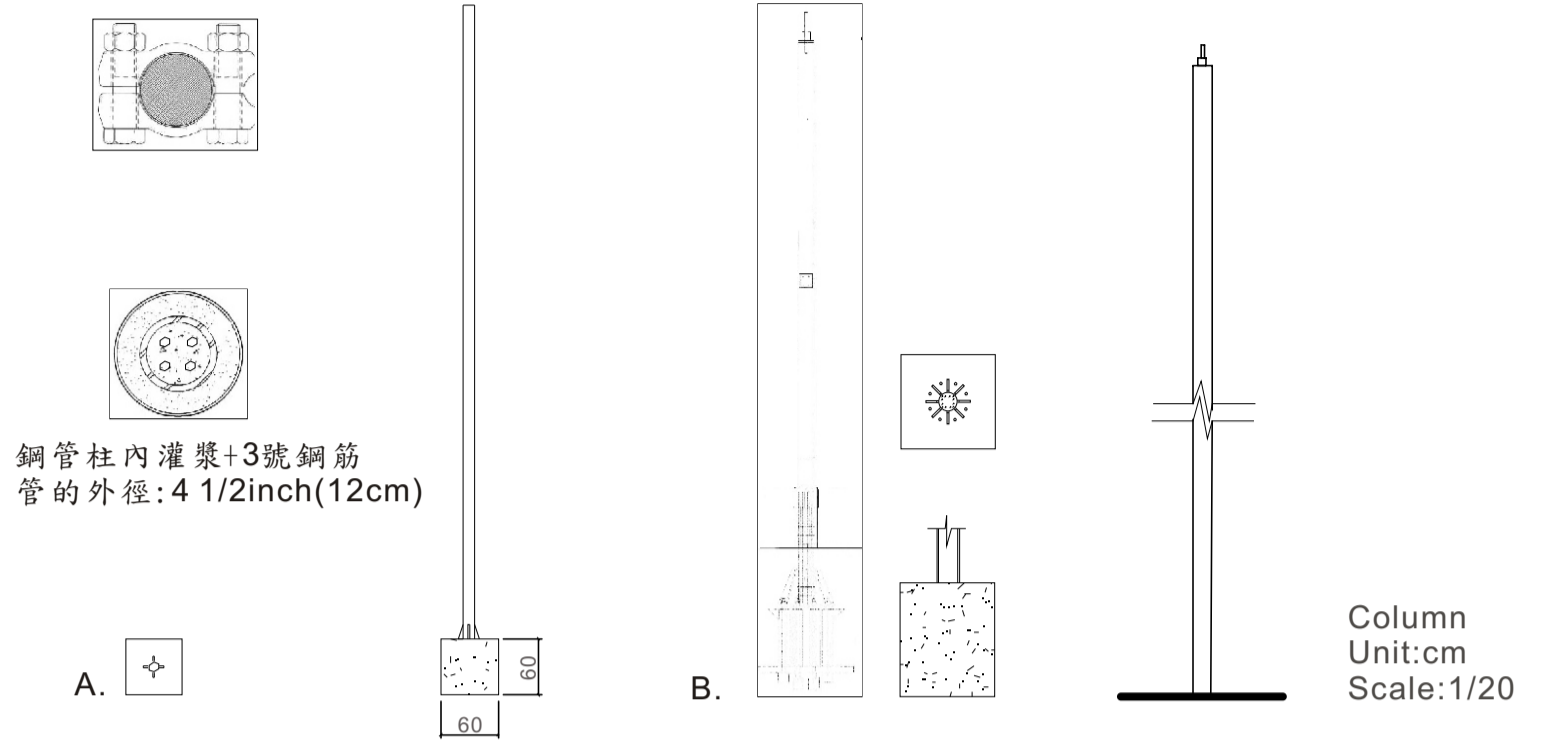
區只徒
的行人
間之延
海之乘
與園騎
庫公車
倉庫踏
將視腳
域為步

產著字於將由倉
金沿門車，再至倉
五則一櫃入，再至倉
路地出貨進，送區
園空地卸道分置的
公的規路義料軌的
與間面道大材或同
倉庫之立用由或機
在業倉庫車可櫃重
倉庫型是貨起庫門
為間多種點，在鋼
管搭置的Frame。

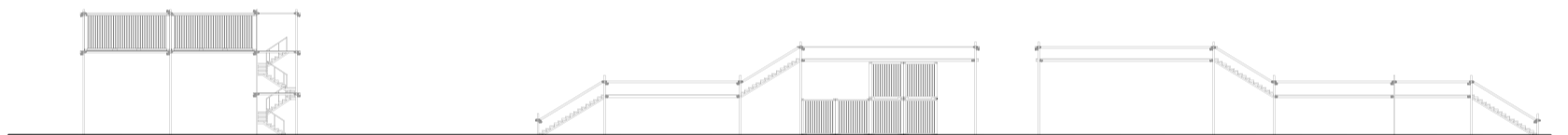
Frame預設卻也限制空
地上無限制的配置排列
可能;也是對基地的界定!
當沒有活動在空地上進
行時，frame成為市民登
高望遠或是停駐休息的
據點。



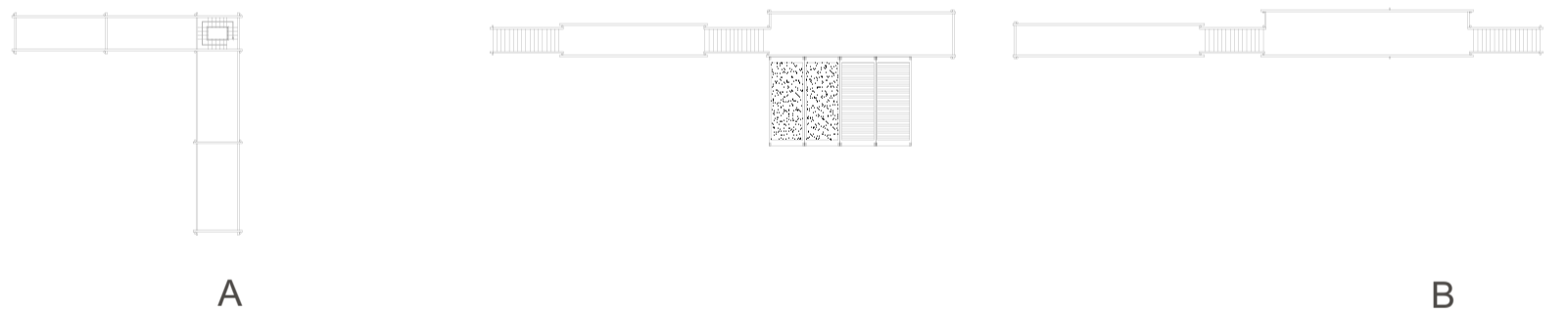
Container stacking + Frame



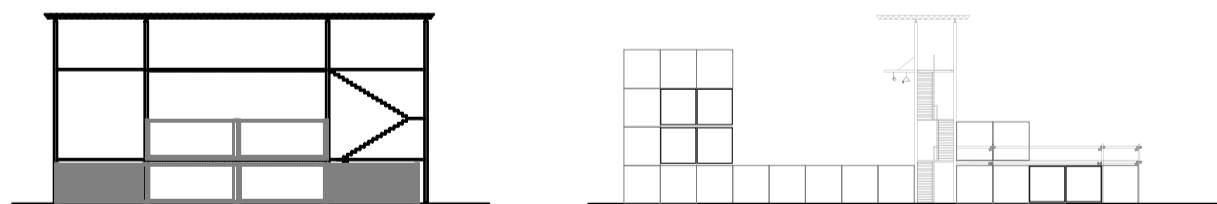
Elevation



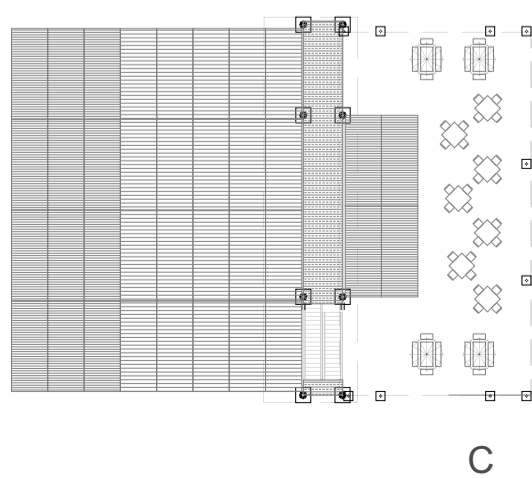
Plan

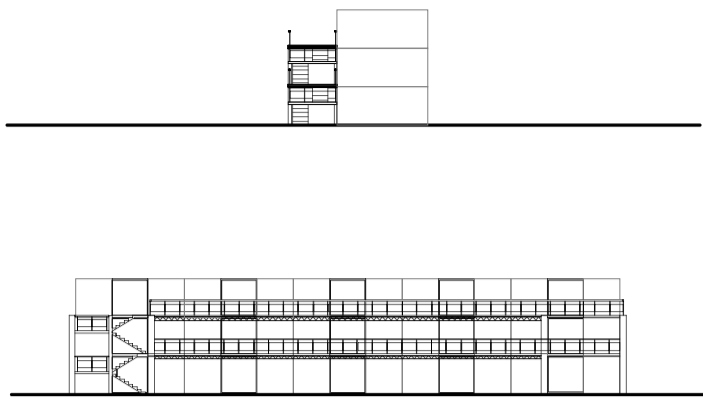


Elevation

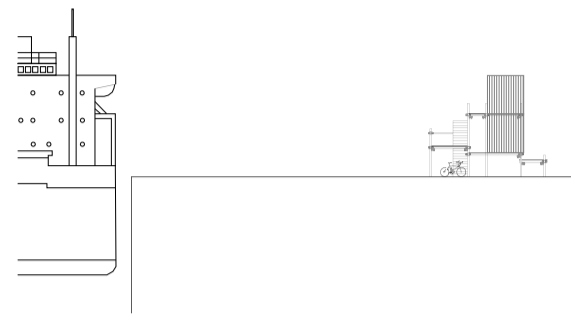
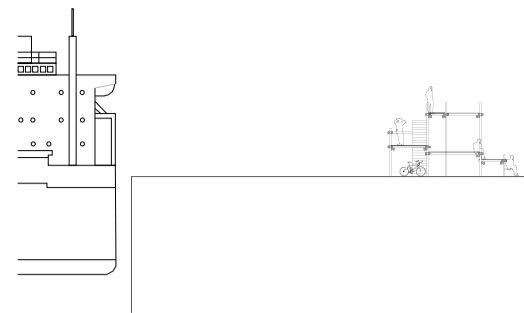


Plan

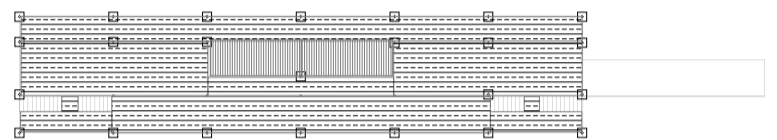




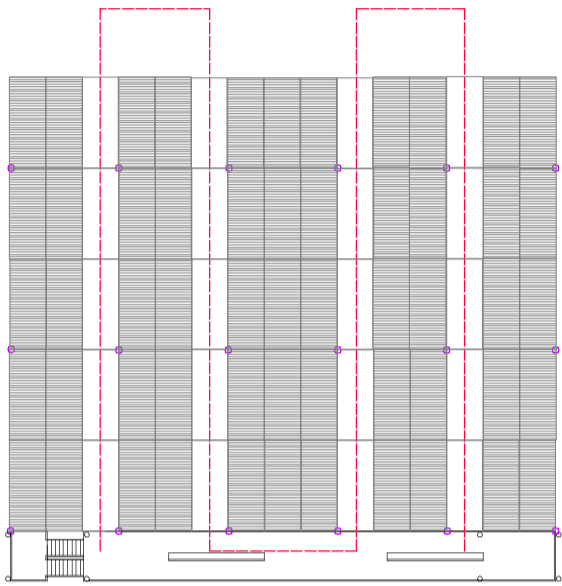
Elevation



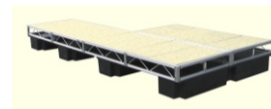
Plan



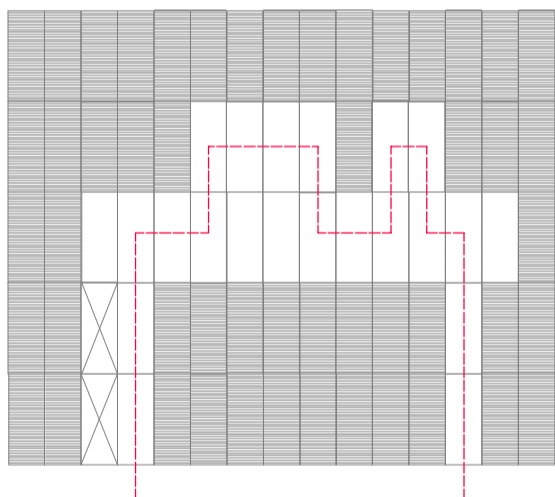
E



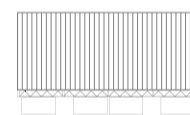
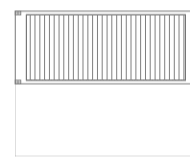
Theme Gallery
ground floor
layer 1



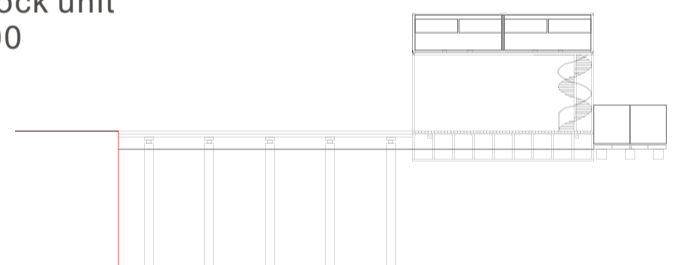
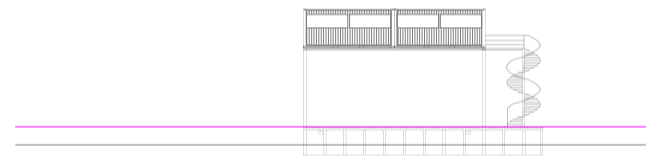
Floating Dock + Frame



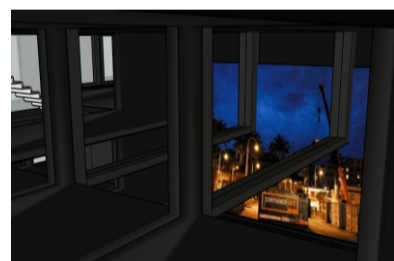
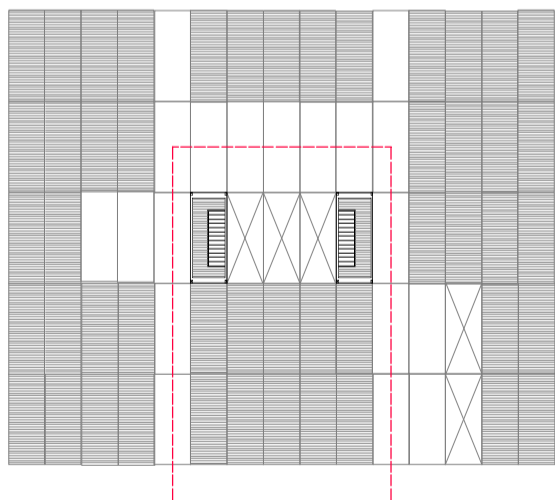
layer 2



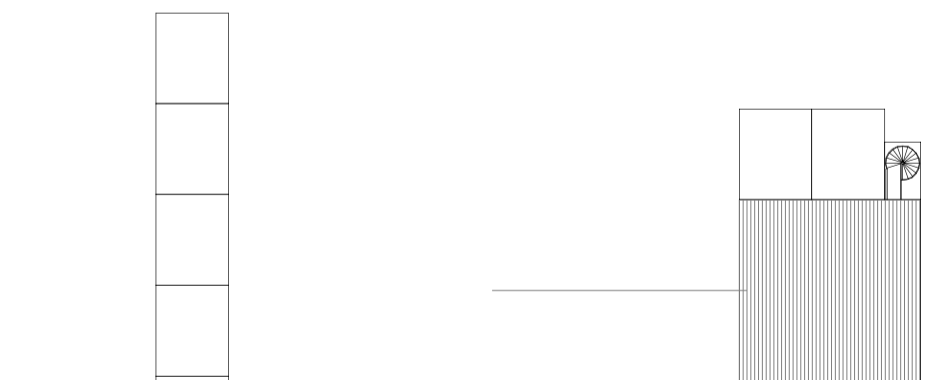
Floating dock unit
scale:1/100



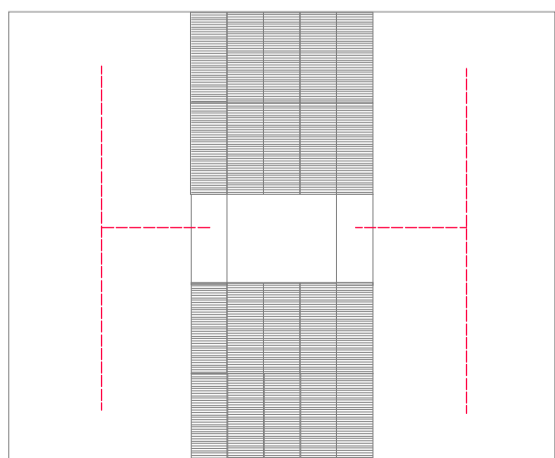
Elevation



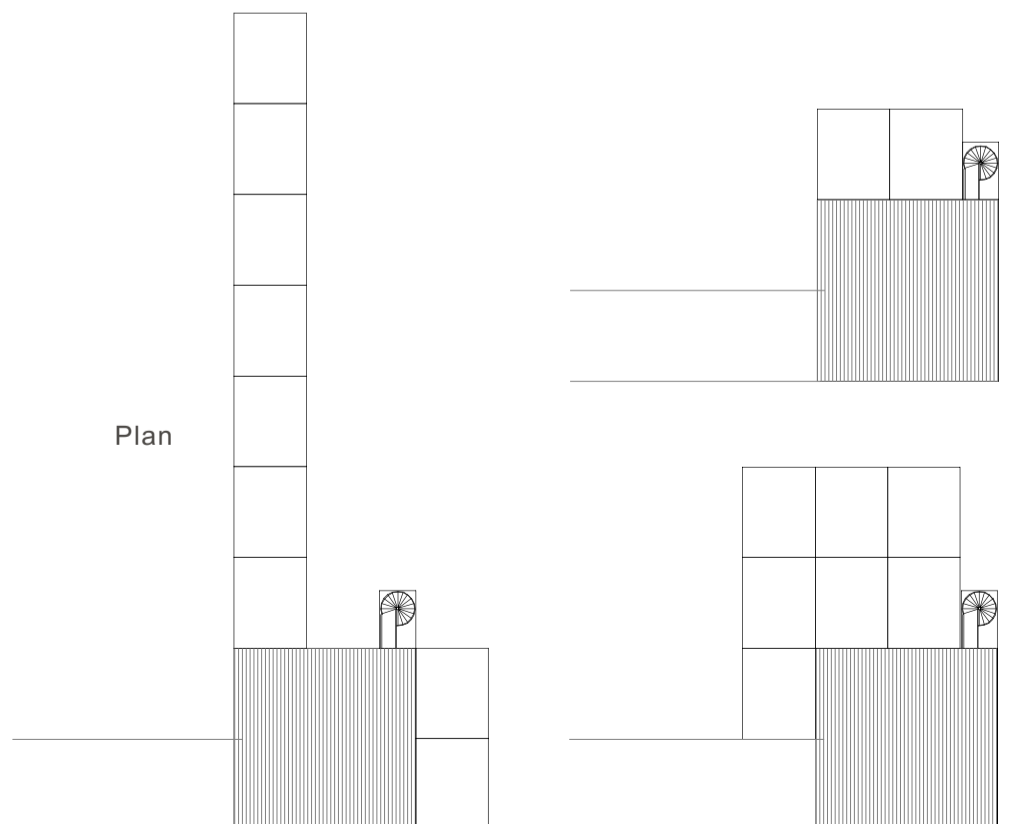
layer 3



Plan



layer 4

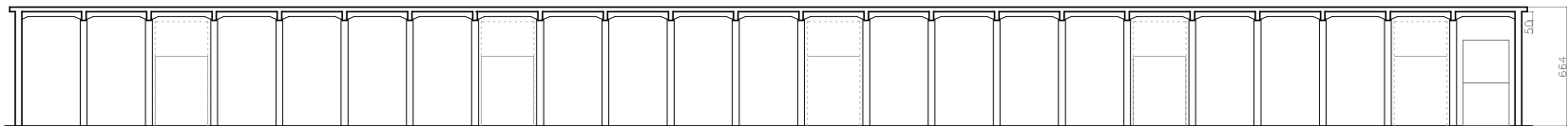
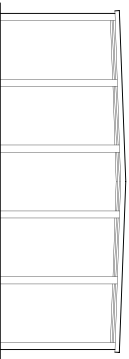
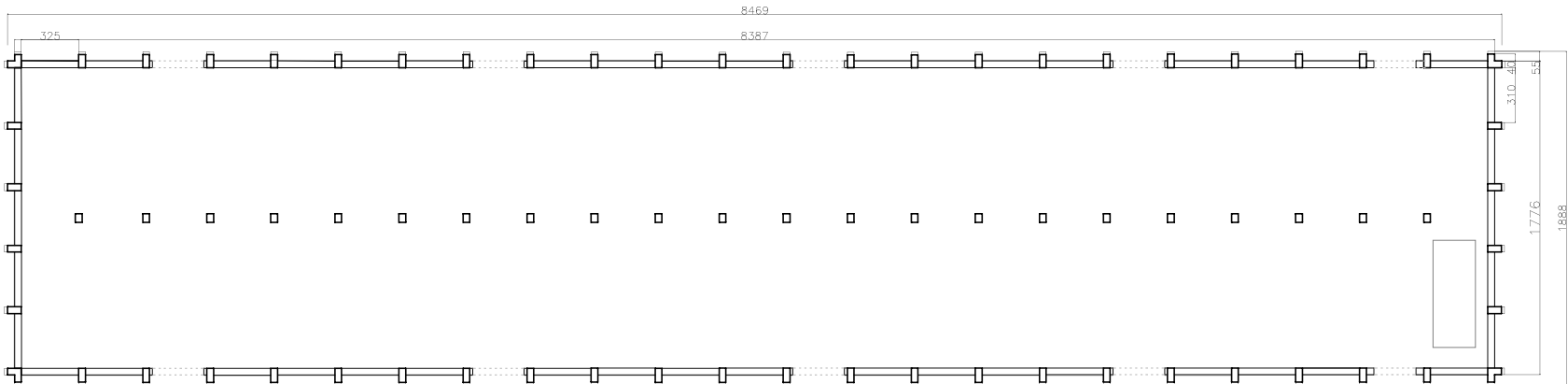
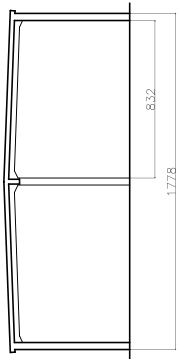
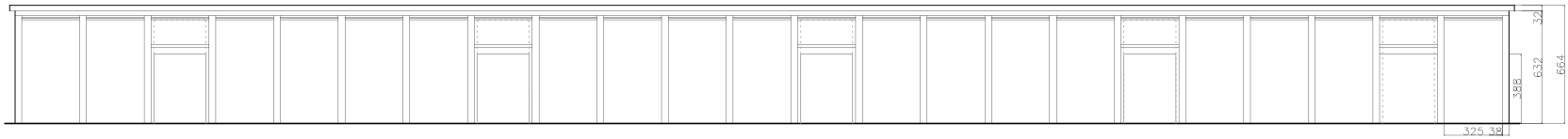


F

D

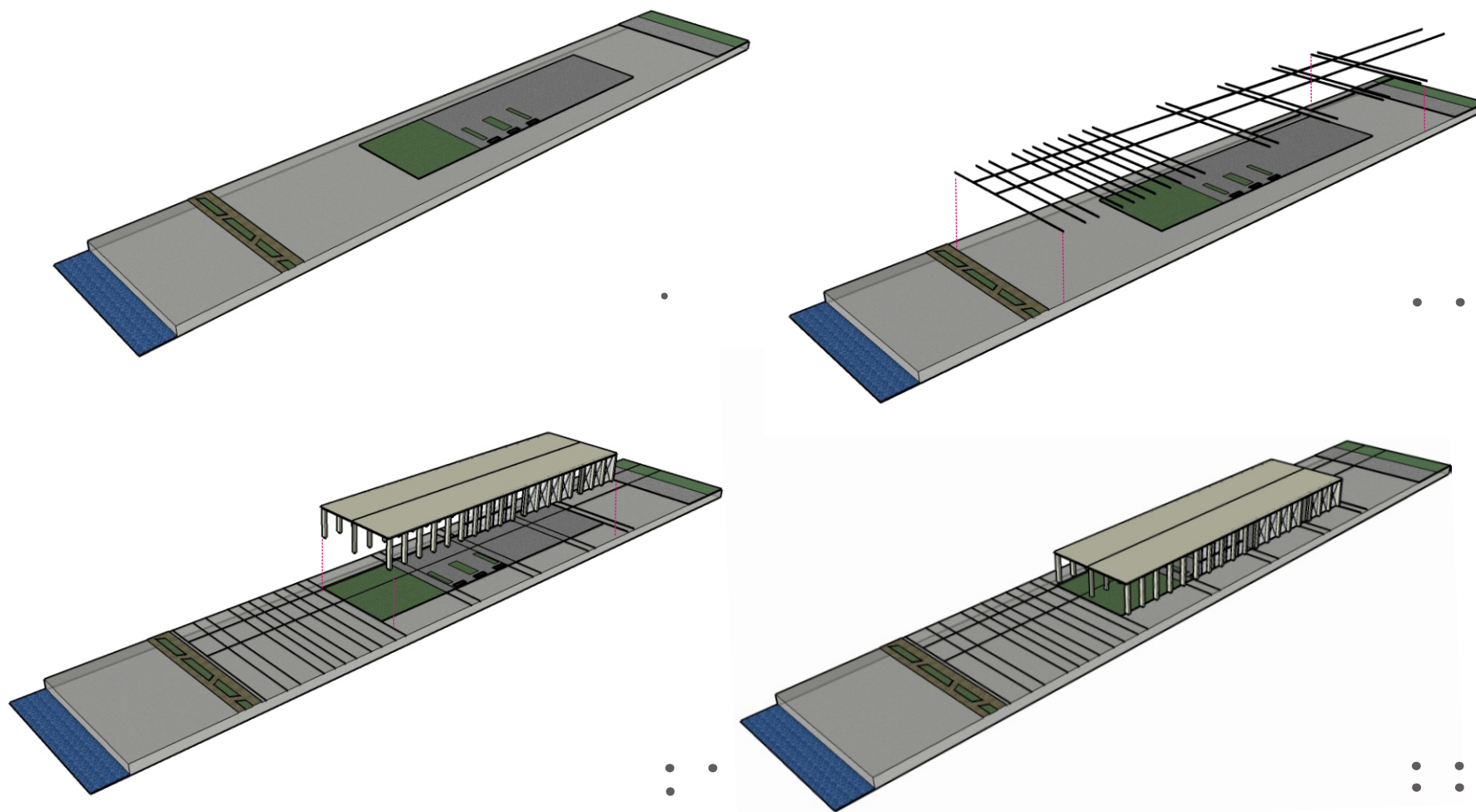
Scale:1/200

5-3 Warehouse

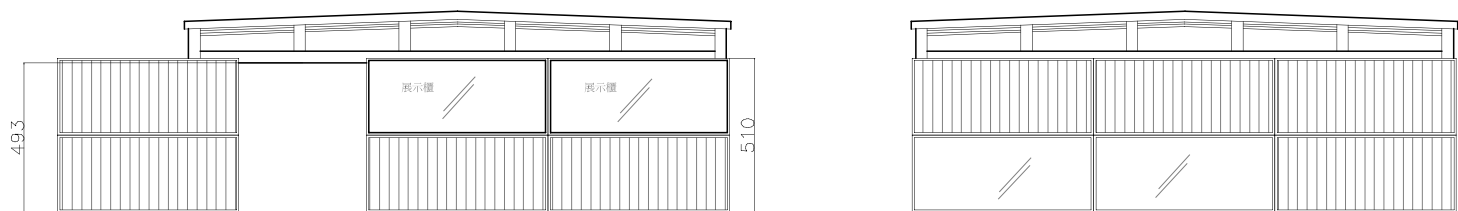


台糖倉庫原使平.立.剖面
Scale:1/400

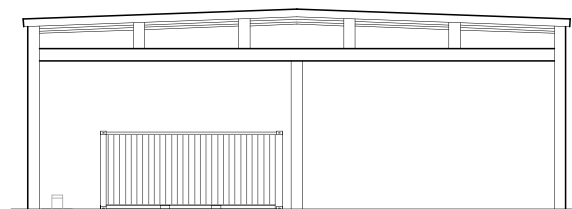
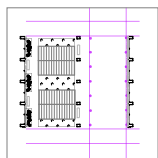
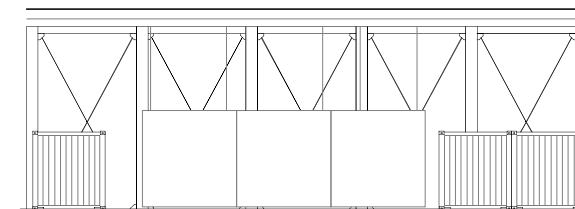
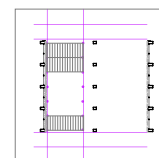
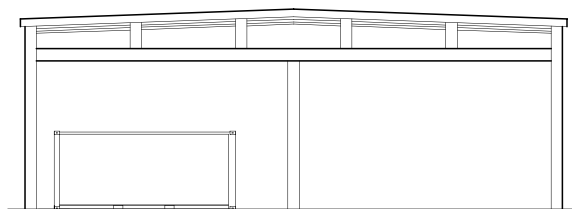
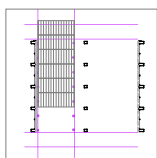
依原有開口我將長條型的倉庫區分為數個區塊，在不同時節program有多重變化時同一倉庫得做出相對的變化以吻合內部機能。我在部份倉庫的立面作了拆除的動作、給予新的皮層，有些是以玻璃及活動展板做為一雙層的牆面，有些則是矩玻璃牆面。玻一利用模舉玻璃框及鐵件組裝而成，放至於偶有外牆偶有不需外牆的區域。讓玻璃拆除後倉庫形成一流通的框架---一個半戶外的空間。基地、軌道與倉庫三個layer在基地上形成一層疊可運作的裝置，可供已預設的多個配置運作。



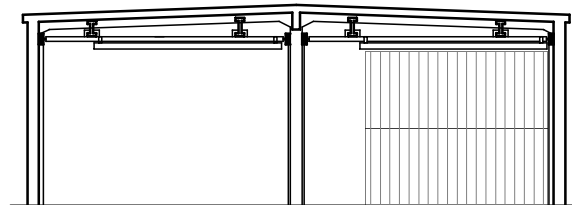
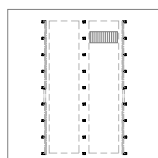
[Warehouse & Container]



正立面貨櫃開合

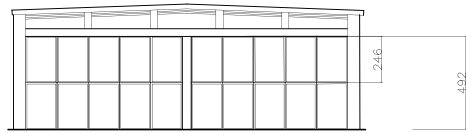


貨櫃+倉庫

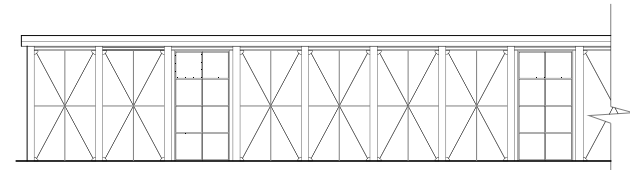


天車+貨櫃

藉著地表上的軌道及天車/起重機，貨櫃可在倉庫內移動、排列、堆疊。在開放的倉庫區塊形成戶外的室內，在關閉的倉庫空間內形成次空間。不同機能內容的貨櫃組合進入可界定改變該區域的使用機能。



可拆式立面

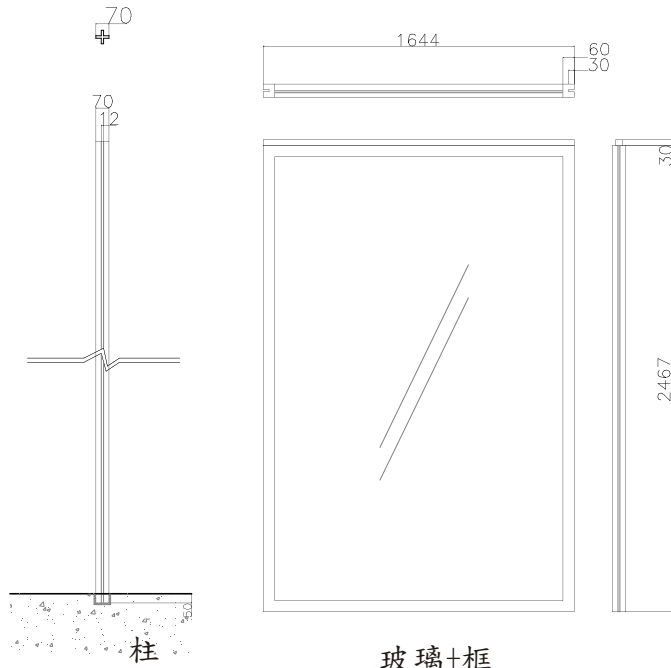


改裝後側立面
Scale:1/400

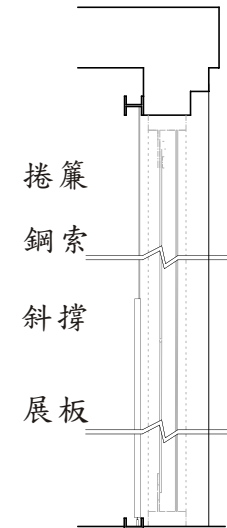
可拆式立面構件



玻璃框+構件平面

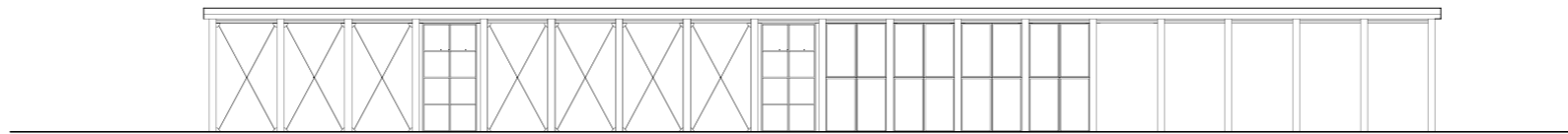


玻璃+框

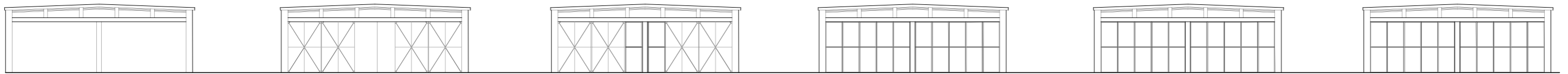


外牆剖面
Scale:1/40
單位:MM

123456
□□□□□□



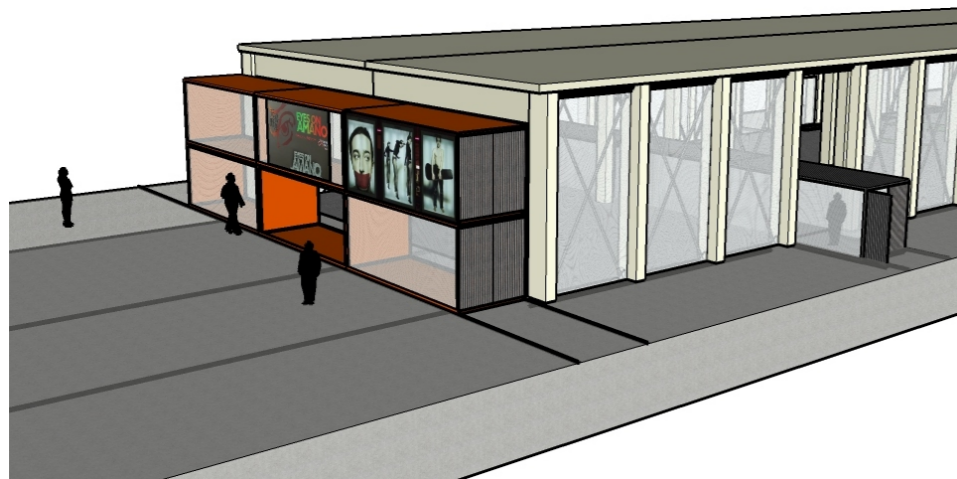
Long elevation of 6th warehouse



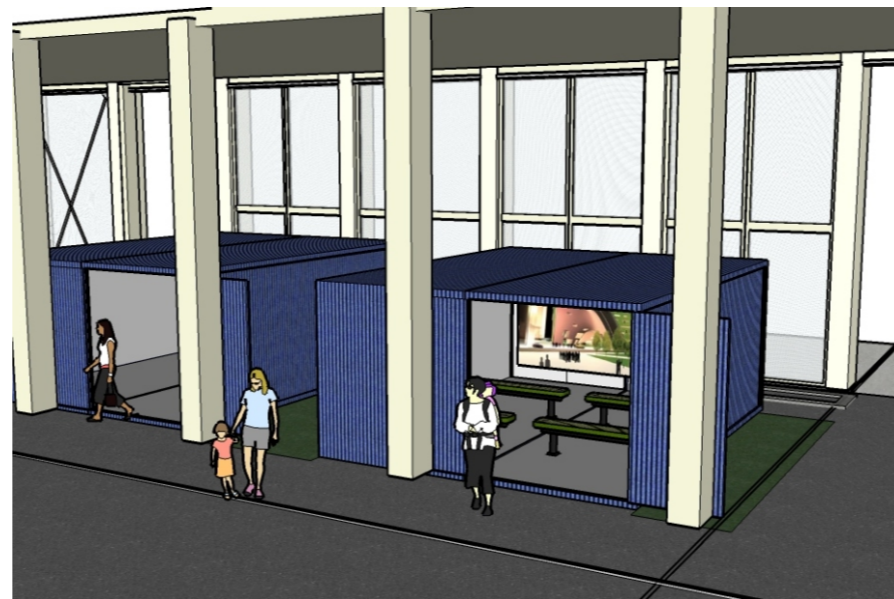
Elevation toward city



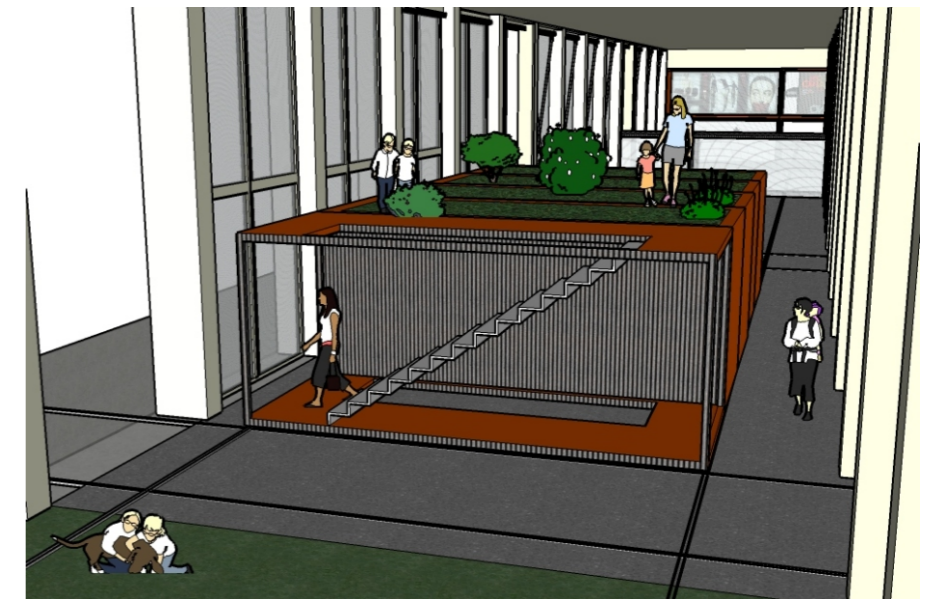
Elevation toward pier
Scale: 1/400



倉庫堆疊出的立面也是廣告看板/展示箱
亦或成為倉庫與倉庫間的PASSAGE



即使是綠地的間距/大小也是因著貨櫃的陳列設定



人工綠帶的進入搭配上玻璃框的拆除就可轉換此區域為"半室外的室內公園"