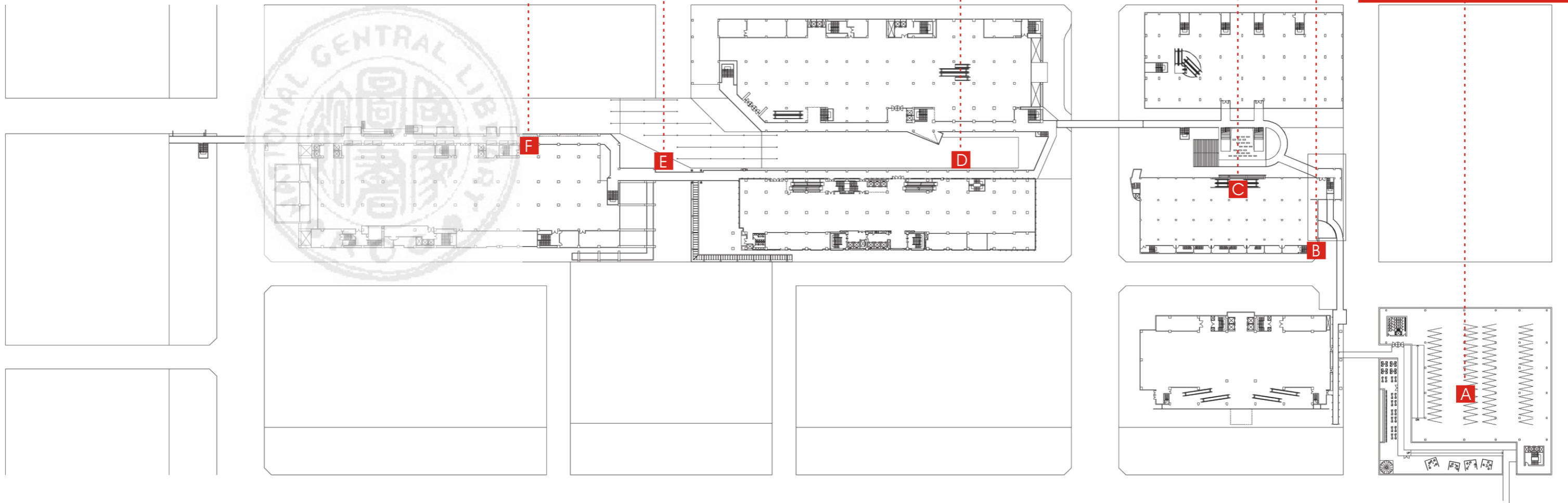


GROUND FLOOR

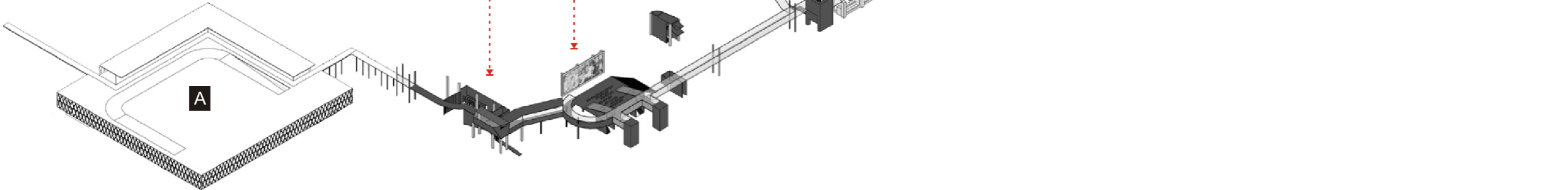
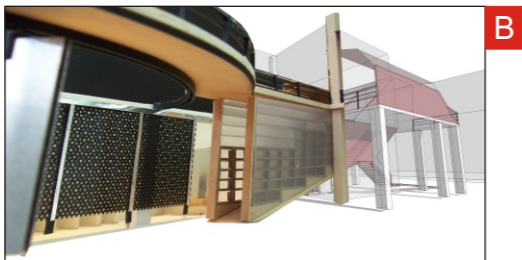
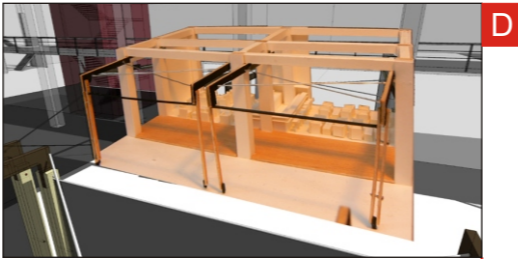
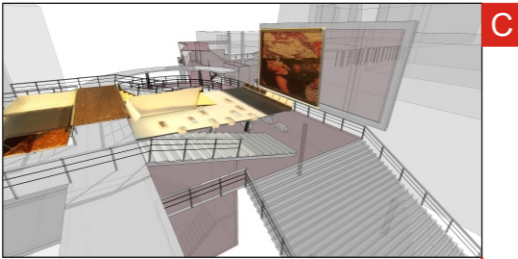
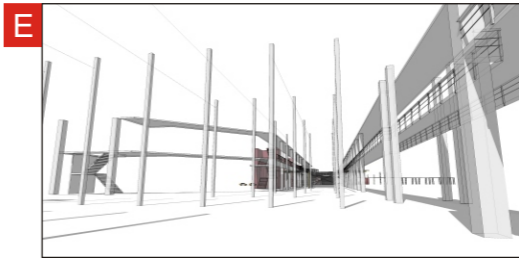
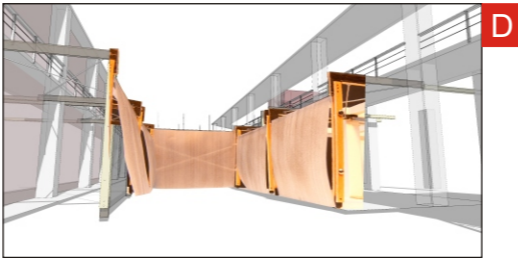
SECOND FLOOR

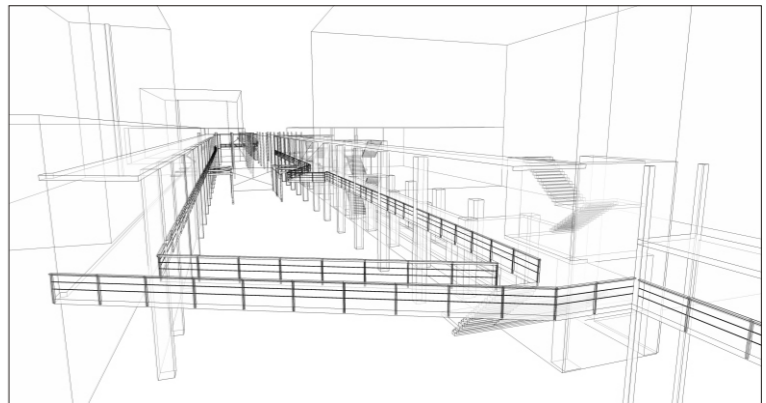
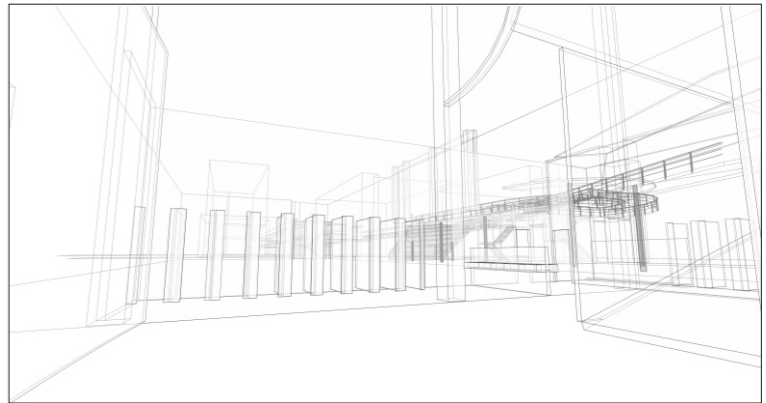
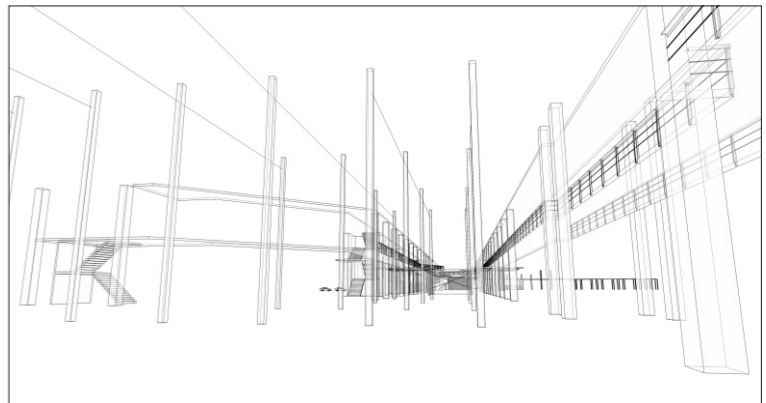
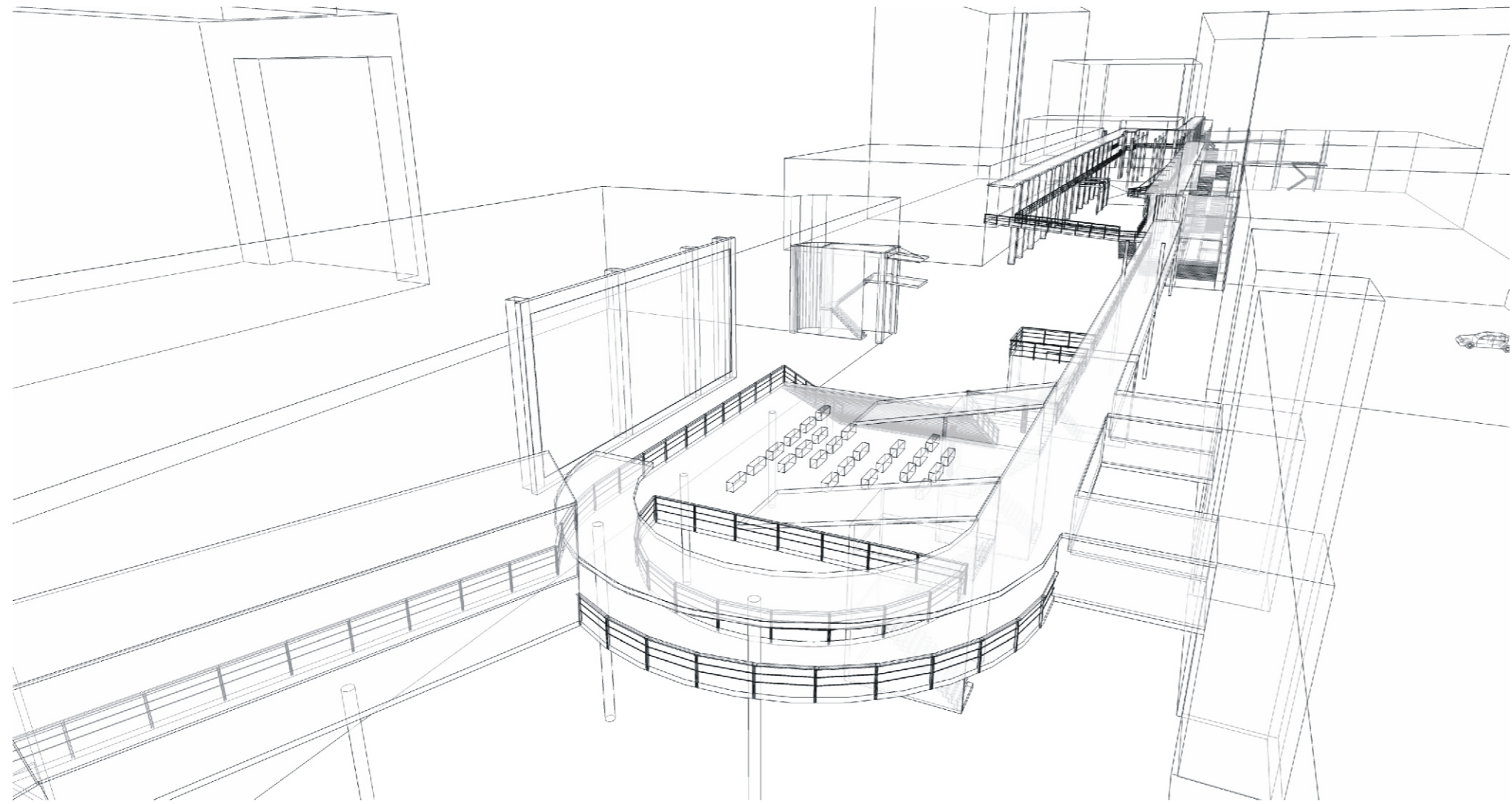
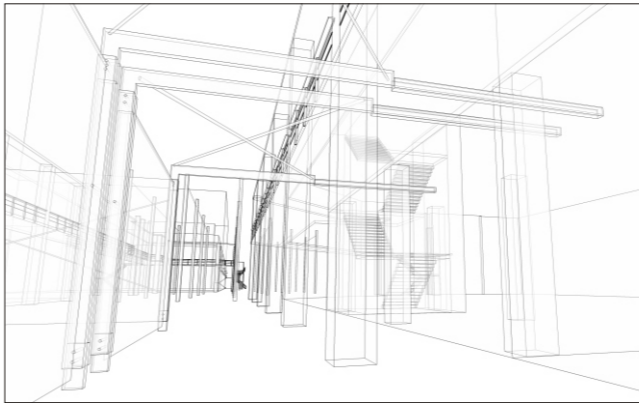
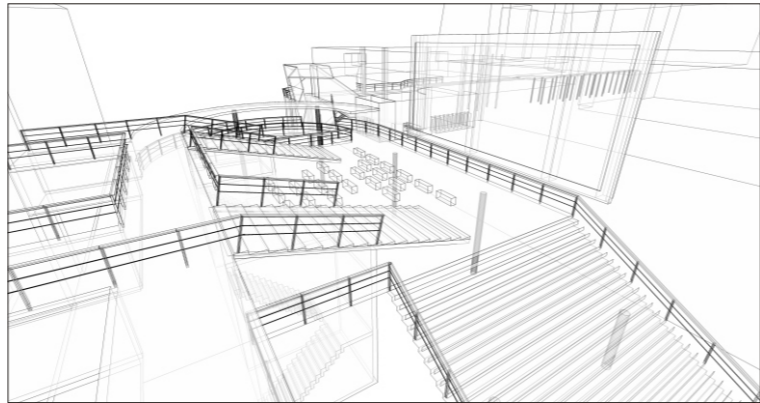
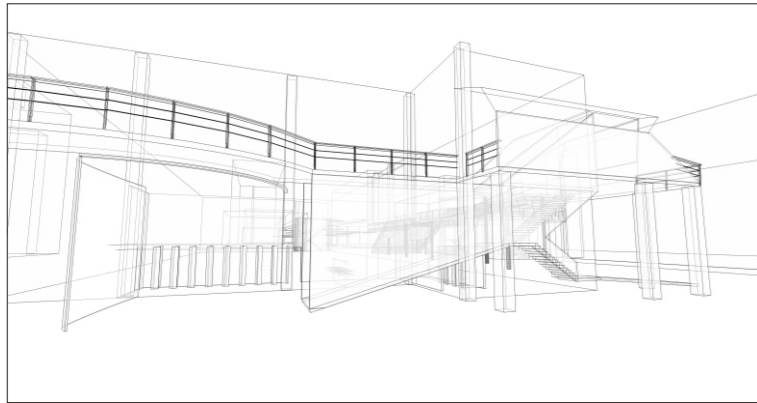


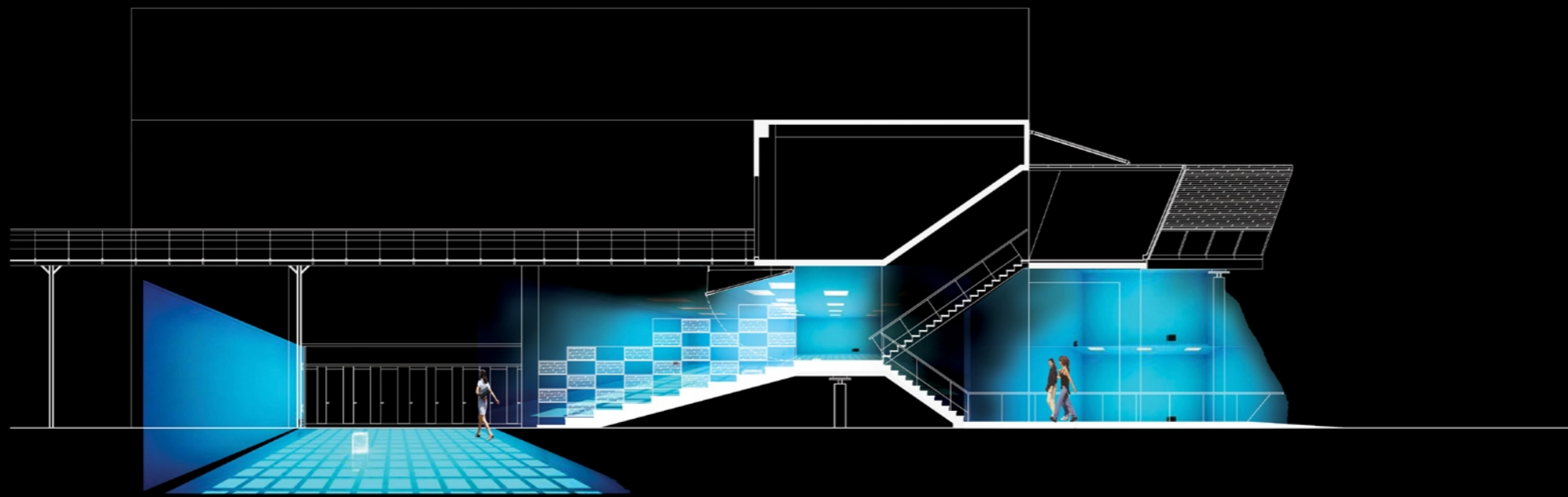
This architectural presentation for 'Nocturnal City' features a central master plan showing the Taipei 101 tower and its connection to a series of urban spaces. The plan is divided into six main zones, each with a scale bar and associated architectural drawings:

- A Parking Bar:** Includes a 1F Plan, 2F Plan, and a 3D rendering of a parking area with a car.
- B Accost Room:** Includes a 1F Plan and a 2F Plan, with 3D renderings of interior spaces.
- C Floating Theater:** Includes a 1F Plan and a 2F Plan, with 3D renderings of a stage and audience area.
- D Circulation Service:** Includes a 1F Plan and a 2F Plan, with 3D renderings of a transit hub.
- E Secret Garden:** Includes a 1F Plan and a 2F Plan, with 3D renderings of an outdoor courtyard.
- F Street Market:** Includes a 1F Plan and a 2F Plan, with 3D renderings of a market street.

Additional architectural drawings include a site plan on the left, a circulation diagram on the right, and various 3D renderings showing the building's facade and interior spaces at night.







SECTION B-B

SECTION C-C

FLOATING THEATER

SECTION F-F

STREET MARKET

ACCOST ROOM

